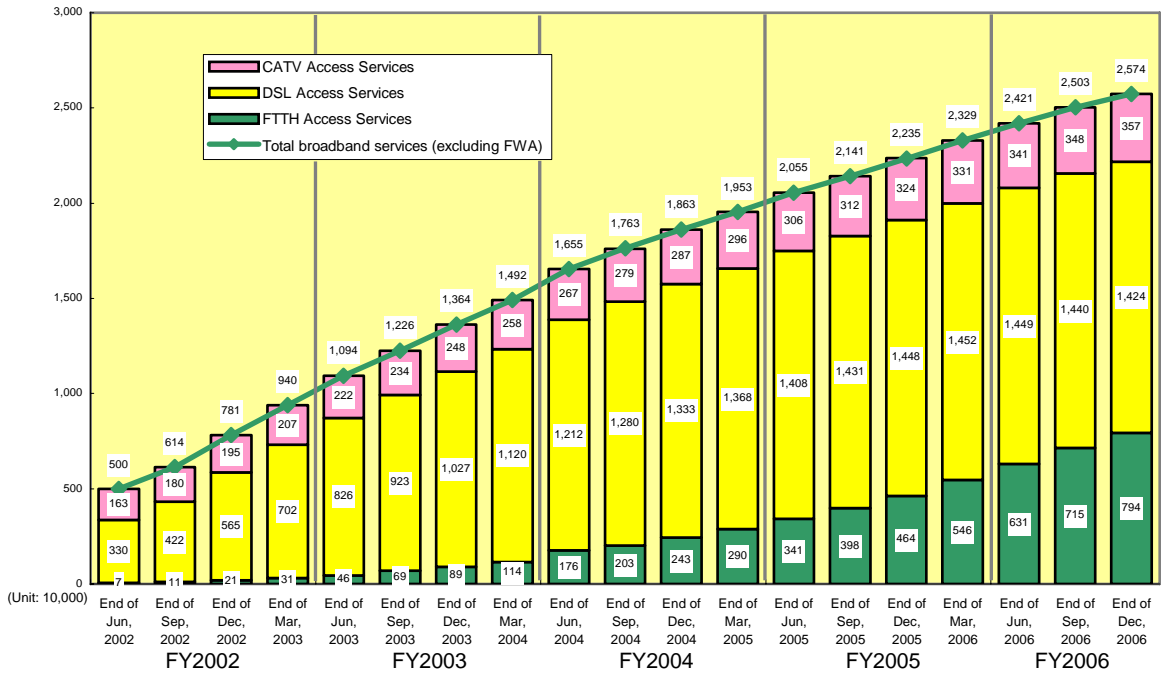


Number of Broadband Service Subscriber Trends (diagram)

1. Broadband Service Subscriber Trends

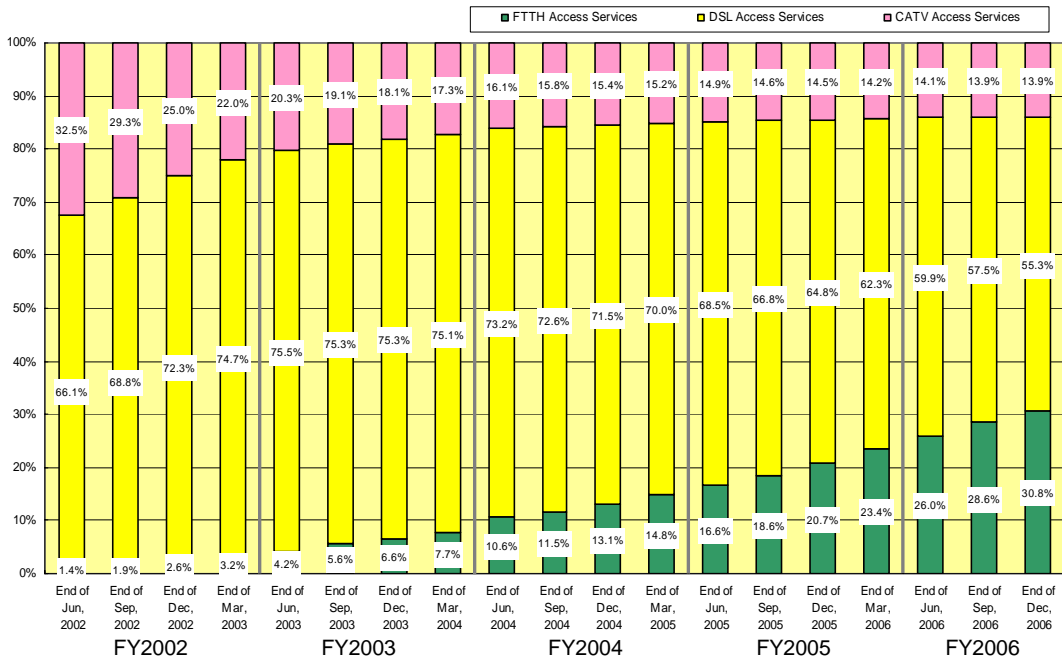
•Broadband Service Subscriber Trends

As of December 31, 2006, there were 25.76 million broadband service subscribers. As of September 30, 2006, there were only 25.04 million. Thus, there was an increase of 710,000 in this quarter.



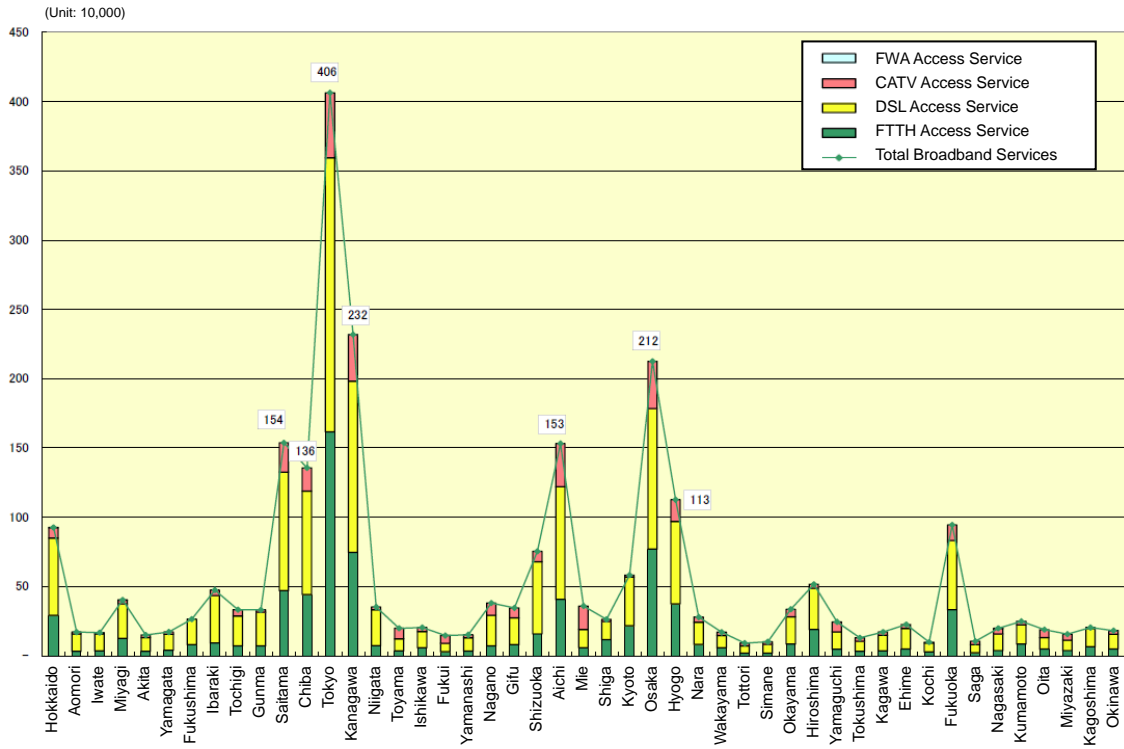
•Broadband Service Subscribers by Broadband Service Type

FTTH subscribers surpassed 30% of the total.



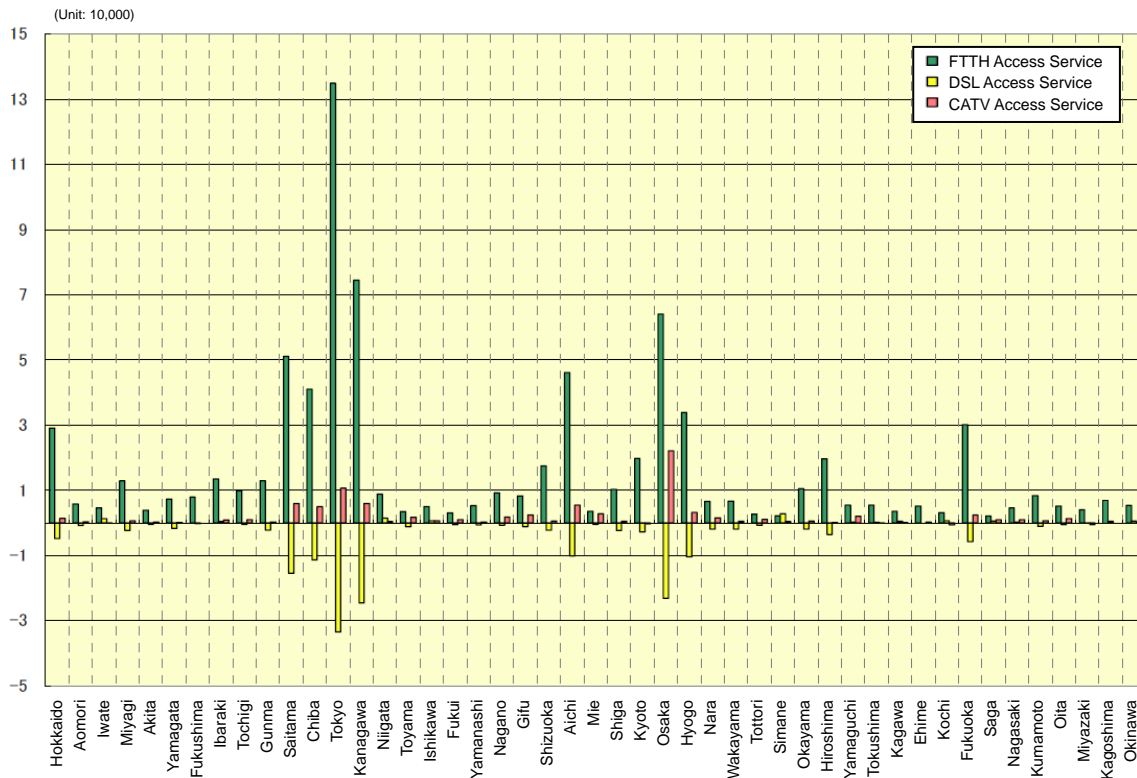
•Broadband Service Subscribers by Prefecture

There were seven prefectures with more than 1 million broadband service subscribers: Tokyo, Kanagawa, Osaka, Saitama, Aichi, Chiba, and Hyogo.



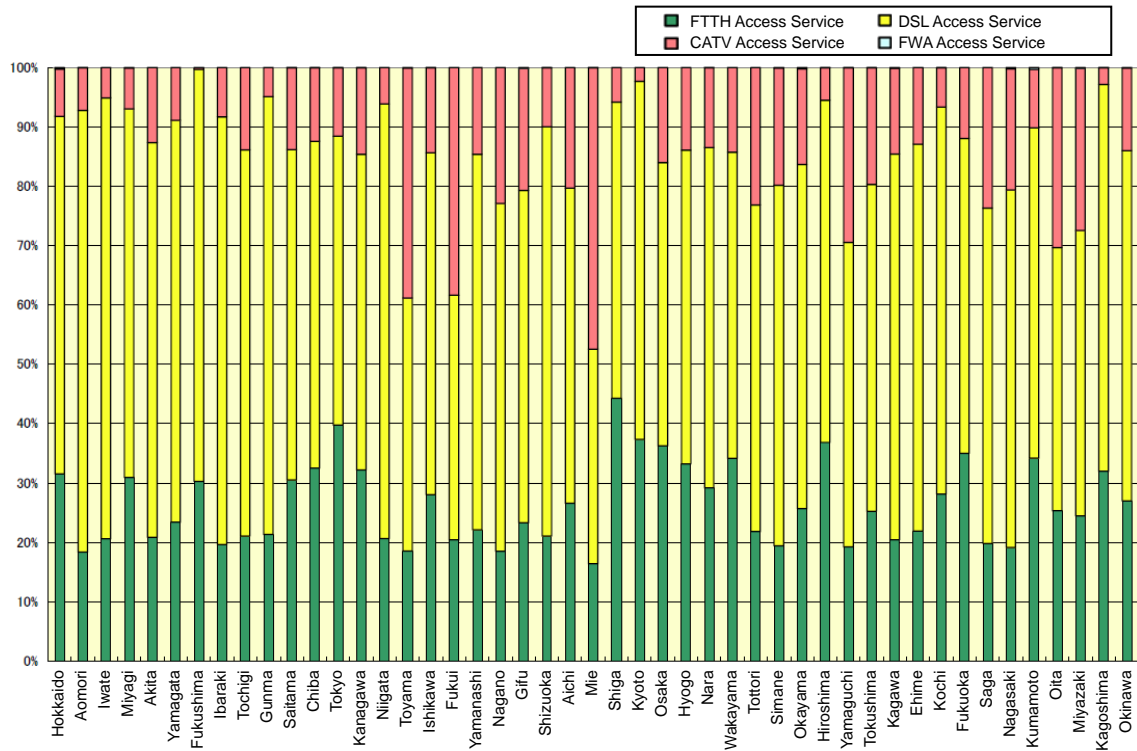
•Broadband Services by Prefecture

In areas where FTTH is growing dramatically, DSL is on the decline. However, in some of these areas, CATV subscribers are increasing.



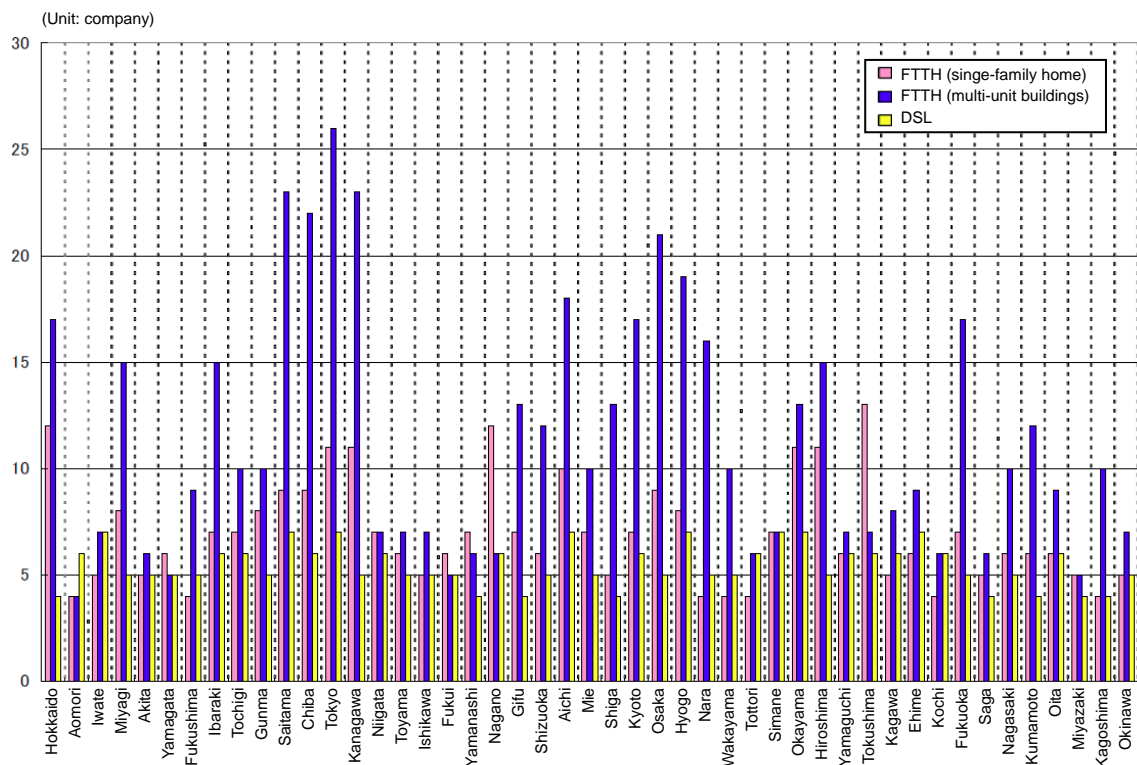
•Broadband Service Market Share by Prefecture

The FTTH subscriber growth rate is high, but market share is small, with the majority of market share going to DSL in most prefectures. In some prefectures such as Toyama, Fukui, and Mie, CATV has a relatively high market share, and there are some prefectures in which FTTH has a 30 to 40% market share.



•FTTH and DSL Service Providers by Prefecture

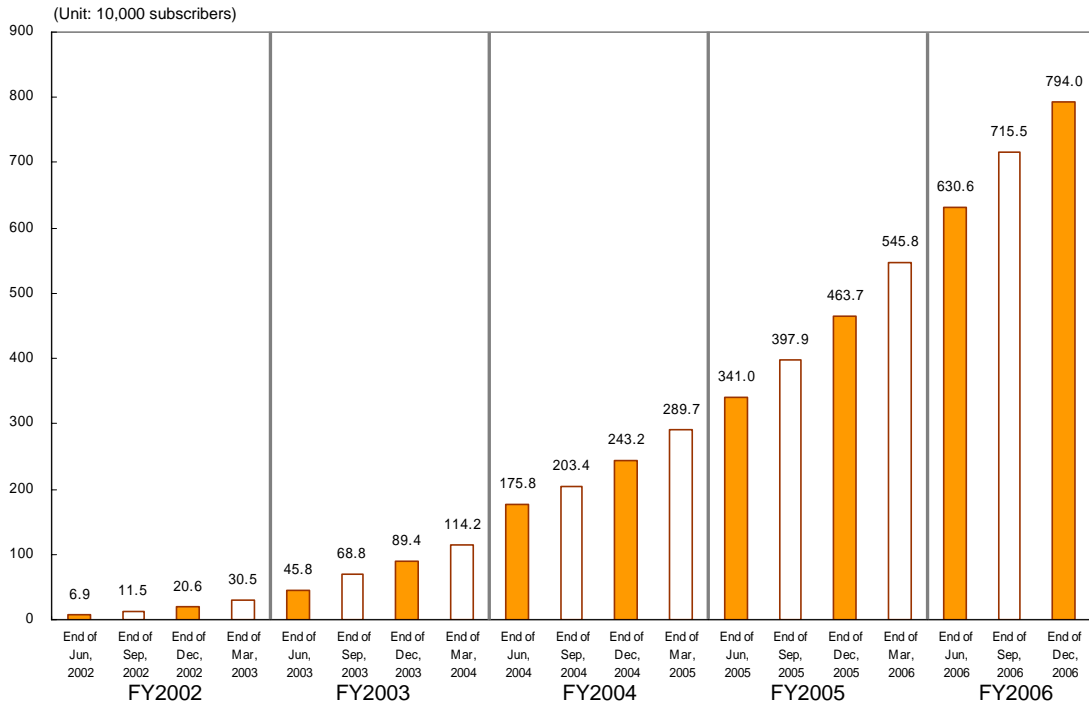
DSL providers are spread throughout the country, but FTTH providers are clustered in the urban areas.



2. FTTH Access Service Subscribers

•FTTH Access Service Subscriber Trends

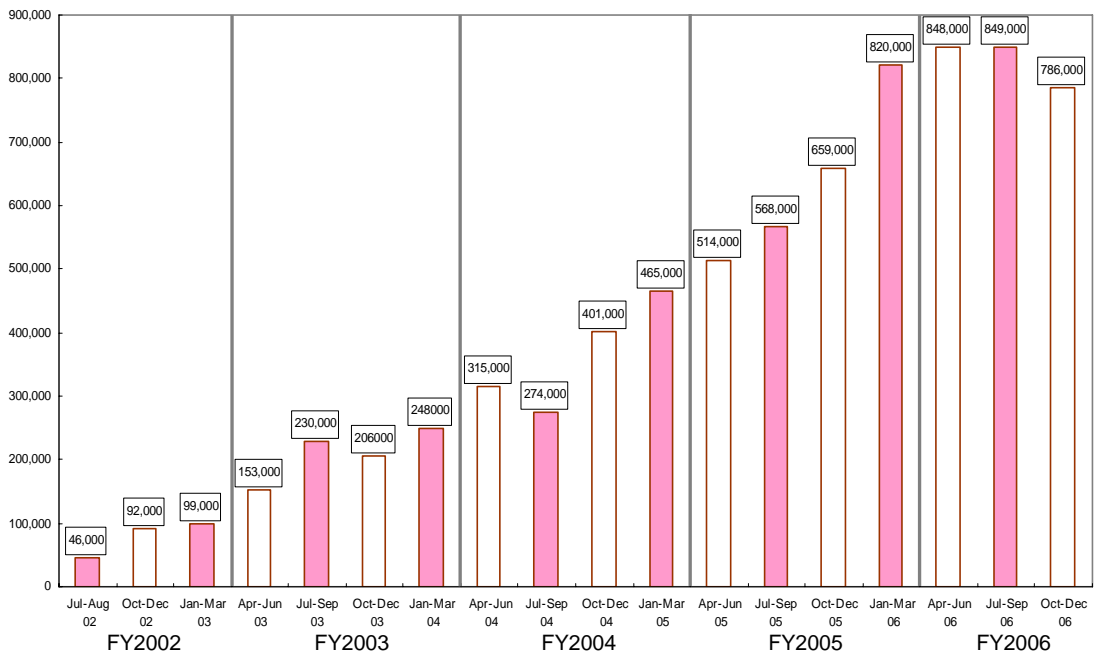
As of December 31, 2006, there were 7.94 million subscribers.



•FTTH Access Service Subscribers Quarterly Trends

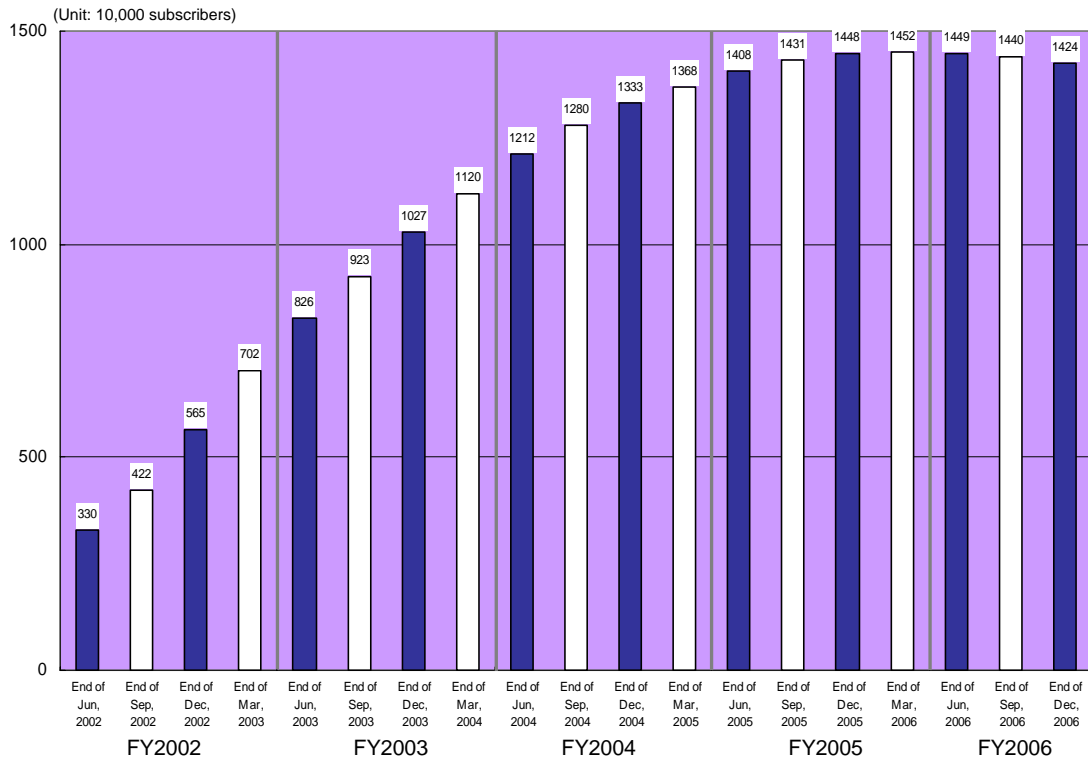
The net increase in FTTH subscribers was 790,000 in this term.

Note: The method of counting this statistic changed in April 2004, thus the figure for the April-June 2004 period is a dummy value that was calculated based on the statistics, and the figure will be different from the officially released values.



3. DSL Access Service Subscribers

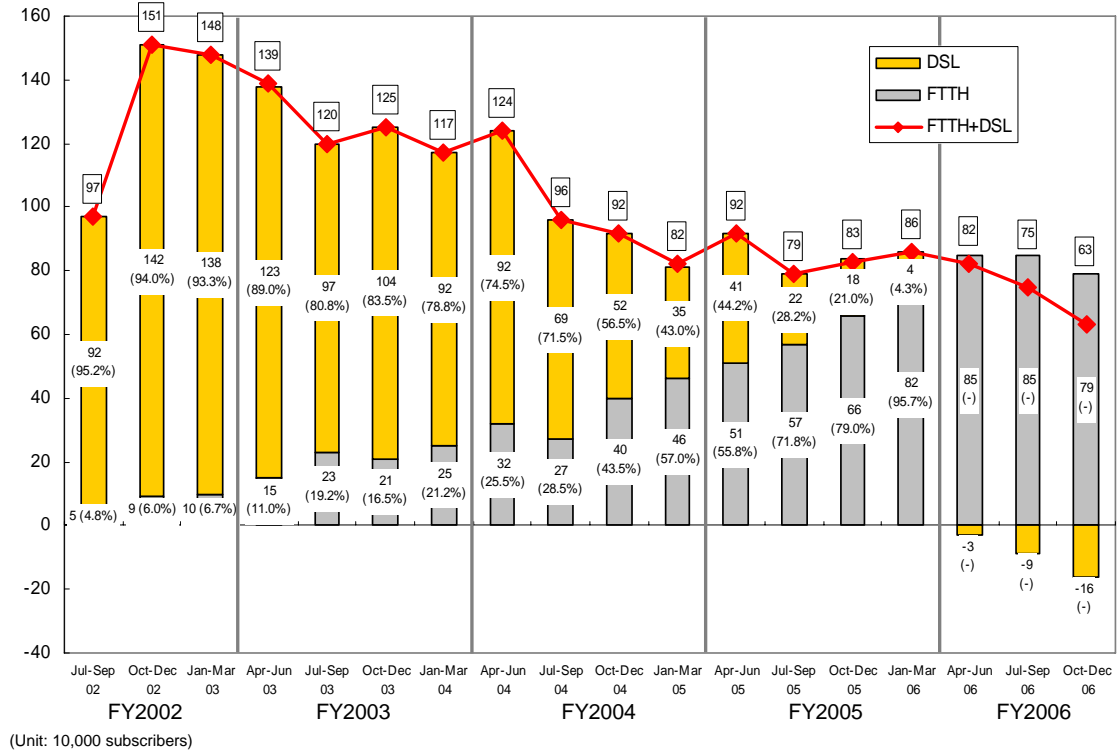
As of December 31, 2006, there were 14.24 million subscribers.



4. FTTH and DSL Subscriber Net Increases

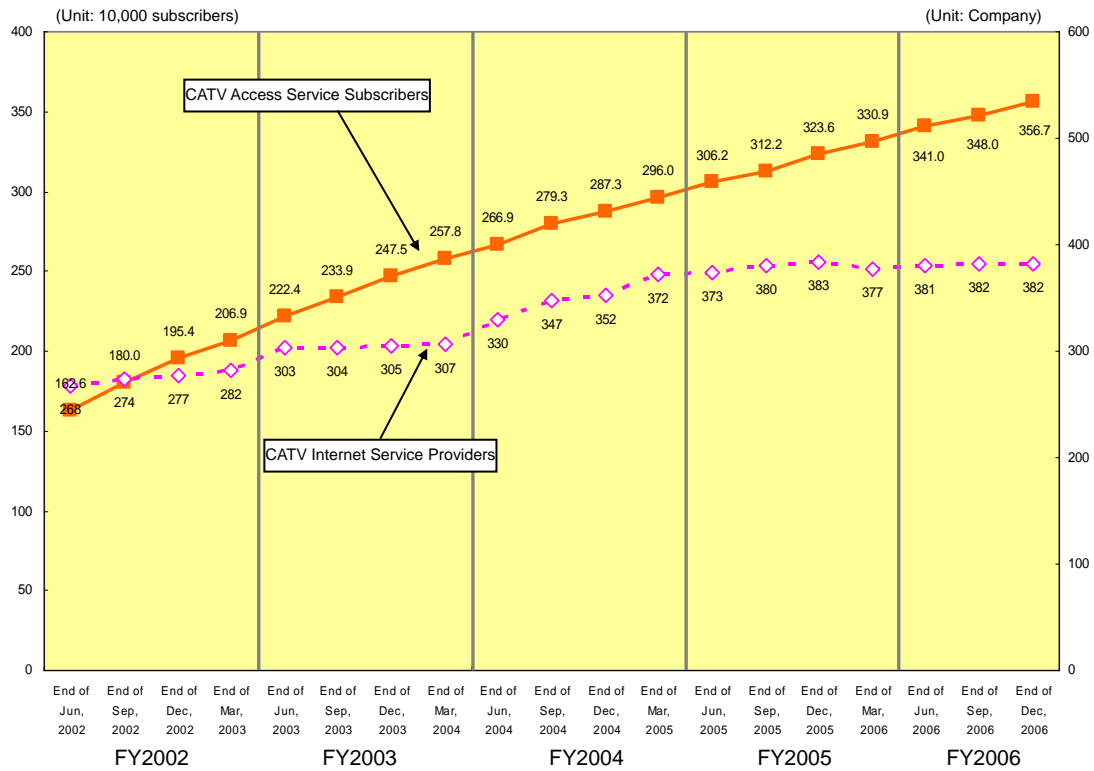
Broadband subscriber numbers are increasing over all, driven by new FTTH

Note: The method of counting this statistic changed in April 2004, thus the figure for the April-June 2004 period is a dummy value that was calculated based on the statistics, and the figure will be different from the officially released values.



5. CATV Access Service Subscriber Trends

As of December 31, 2006, there were 3.57 million CATV Access Service subscribers. The number of subscribers continues to rise at a steady pace.



6. FWA Access Service Subscribers

As of 31 December, 2006, there were 11,580 subscribers, and they are increasing gradually.

