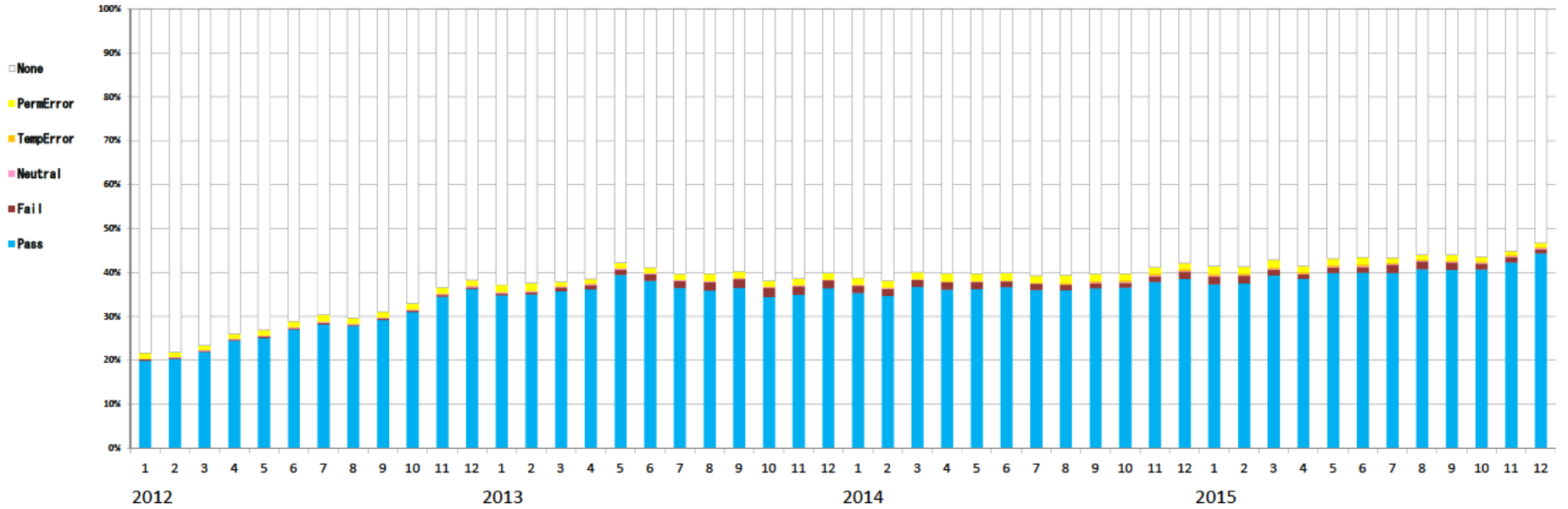


送信ドメイン認証結果の集計(DKIM)(2024年3月時点)

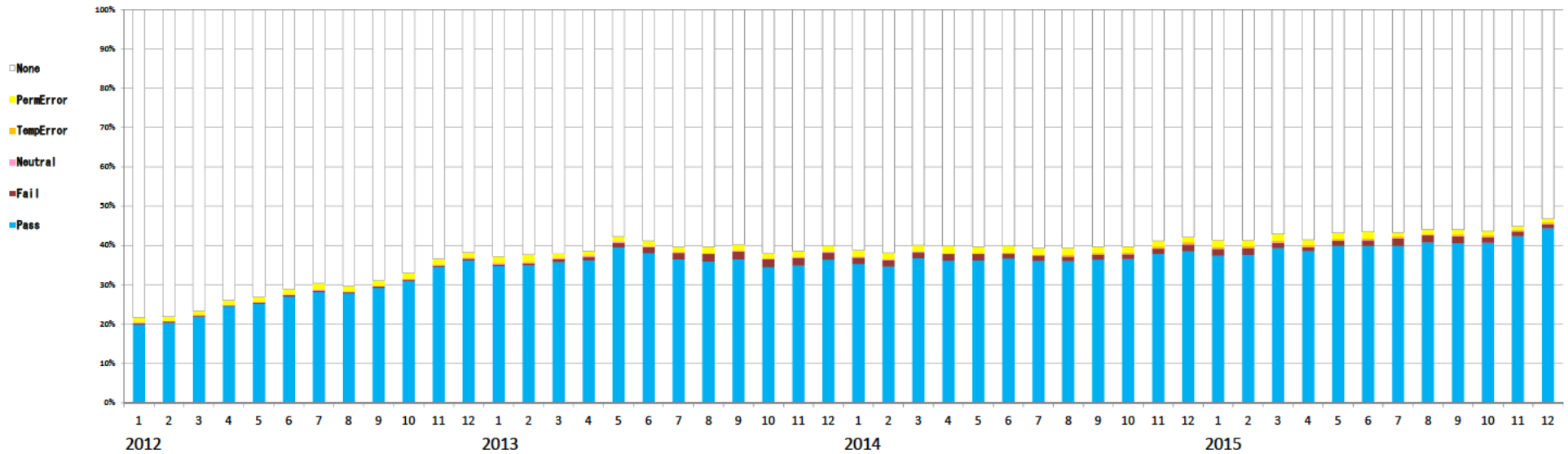
The number of data SSP	2012年												2013年												2014年												2015年														
	1月	2月	3月	4月	5月	6月	7月	8月	9月	10月	11月	12月	1月	2月	3月	4月	5月	6月	7月	8月	9月	10月	11月	12月	1月	2月	3月	4月	5月	6月	7月	8月	9月	10月	11月	12月	1月	2月	3月	4月	5月	6月	7月	8月	9月	10月	11月	12月			
the ratio of DKIM																																																			
① None no signature	76.34%	76.50%	76.61%	77.00%	77.00%	77.00%	77.00%	77.00%	77.00%	77.00%	77.00%	77.00%	82.01%	82.42%	82.14%	81.40%	87.70%	88.87%	89.31%	89.31%	89.31%	89.31%	89.31%	89.31%	89.31%	87.22%	87.87%	88.82%	89.17%	89.20%	89.10%	89.71%	89.85%	89.20%	89.20%	89.80%	87.87%	88.67%	88.67%	87.10%	88.52%	88.84%	88.84%	88.84%	88.84%	88.84%	88.84%	88.84%	88.84%	88.84%	
② Neutral bad format	0.21%	0.17%	0.16%	0.18%	0.18%	0.21%	0.20%	0.18%	0.20%	0.22%	0.20%	0.20%	0.38%	0.38%	0.34%	0.32%	0.31%	0.34%	0.22%	0.21%	0.20%	0.18%	0.20%	0.17%	0.22%	0.28%	0.18%	0.12%	0.10%	0.10%	0.08%	0.08%	0.18%	0.18%	0.18%	0.18%	0.18%	0.18%	0.18%	0.18%	0.18%	0.18%	0.18%	0.18%	0.18%	0.18%	0.18%	0.18%	0.18%	0.18%	0.18%
③ Pass good	19.17%	20.26%	21.87%	24.30%	25.10%	27.07%	28.20%	27.88%	29.23%	30.89%	34.53%	36.23%	34.98%	35.02%	35.60%	36.19%	36.52%	36.10%	36.52%	36.50%	36.50%	34.40%	34.80%	35.40%	36.20%	34.71%	36.70%	36.14%	36.20%	36.70%	36.11%	36.02%	36.40%	36.50%	37.80%	38.40%	38.40%	37.41%	37.80%	38.20%	38.60%	38.60%	38.60%	38.60%	40.60%	40.60%	40.70%	42.37%	44.21%		
④ Fail (bad)	0.27%	0.30%	0.28%	0.26%	0.29%	0.29%	0.30%	0.32%	0.34%	0.37%	0.37%	0.38%	0.38%	0.40%	0.40%	0.38%	1.58%	1.48%	1.81%	1.80%	1.80%	2.07%	1.81%	1.80%	1.80%	1.80%	1.57%	1.71%	1.80%	1.20%	1.40%	1.18%	1.21%	1.21%	1.21%	1.21%	1.21%	1.21%	1.21%	1.21%	1.21%	1.21%	1.21%	1.21%	1.21%	1.21%	1.21%	1.21%	1.21%	1.21%	
⑤ TempError revoked	0.00%	0.00%	0.00%	0.04%	0.04%	0.02%	0.00%	0.00%	0.04%	0.04%	0.02%	0.01%	0.01%	0.01%	0.01%	0.02%	0.01%	0.01%	0.01%	0.00%	0.01%	0.02%	0.07%	0.01%	0.00%	0.01%	0.00%	0.01%	0.00%	0.00%	0.00%	0.41%	0.38%	0.30%	0.48%	0.40%	0.40%	0.42%	0.42%	0.39%	0.42%	0.40%	0.38%	0.32%	0.32%	0.28%	0.30%	0.30%	0.34%		
⑥ PermError no key	1.21%	1.07%	0.88%	1.06%	1.22%	1.34%	1.53%	1.32%	1.27%	1.40%	1.41%	1.28%	1.84%	1.70%	0.87%	1.00%	1.21%	1.20%	1.30%	1.88%	1.80%	1.31%	1.43%	1.38%	1.80%	1.84%	1.58%	1.88%	1.88%	1.83%	1.50%	1.88%	1.87%	1.47%	1.32%	1.20%	1.88%	1.81%	1.88%	1.34%	1.43%	1.57%	1.88%	1.31%	1.23%	1.03%	0.84%	0.81%			



※出典：電気通信事業者5社の協力により、総務省がとりまとめ

The situation of DKIM (as of March 2024)

	2011年												2012年												2013年												2014年												2015年											
	7月	8月	9月	10月	11月	12月	1月	2月	3月	4月	5月	6月	7月	8月	9月	10月	11月	12月	1月	2月	3月	4月	5月	6月	7月	8月	9月	10月	11月	12月	1月	2月	3月	4月	5月	6月	7月	8月	9月	10月	11月	12月	1月	2月	3月	4月	5月	6月	7月	8月	9月	10月	11月	12月						
The number of data ISP	4	4	4	4	4	4	4	4	4	4	4	4	4	4	4	4	4	4	4	4	4	4	4	4	4	4	4	4	4	4	4	4	4	4	4	4	4	4	4	4	4	4	4	4	4	4	4	4	4	4	4	4	4	4						
The ratio of DKIM																																																												
1) None no signature	80.00%	80.30%	82.84%	80.86%	76.47%	77.97%	78.34%	78.10%	76.61%	73.95%	73.00%	71.00%	69.64%	70.22%	68.90%	68.90%	63.30%	61.77%	62.81%	62.42%	62.14%	61.40%	61.70%	60.97%	60.31%	60.20%	59.74%	61.91%	61.42%	60.16%	61.22%	61.87%	59.92%	60.17%	60.28%	60.16%	60.71%	60.80%	60.23%	60.23%	58.80%	57.87%	58.81%	58.63%	57.10%	56.92%	56.94%	56.98%	56.68%	55.94%	56.02%	56.38%	55.10%	53.21%						
2) Neutral bad format	0.18%	0.19%	0.18%	0.18%	0.19%	0.22%	0.21%	0.17%	0.18%	0.18%	0.21%	0.22%	0.19%	0.20%	0.22%	0.20%	0.32%	0.30%	0.30%	0.34%	0.32%	0.31%	0.24%	0.23%	0.21%	0.22%	0.19%	0.20%	0.17%	0.22%	0.28%	0.18%	0.18%	0.13%	0.13%	0.12%	0.08%	0.09%	0.13%	0.16%	0.17%	0.19%	0.11%	0.10%	0.12%	0.10%	0.10%	0.10%	0.10%	0.10%	0.17%	0.17%	0.19%							
3) Pass good	10.70%	9.70%	16.10%	17.76%	20.30%	20.82%	19.97%	20.34%	21.97%	24.90%	25.18%	27.07%	28.28%	27.83%	29.23%	30.99%	34.93%	36.23%	34.88%	35.02%	35.80%	36.19%	36.92%	36.19%	36.52%	35.98%	36.50%	34.40%	34.96%	36.43%	35.33%	34.71%	36.70%	36.14%	36.29%	36.72%	36.11%	36.62%	36.41%	34.92%	37.89%	38.94%	37.41%	37.90%	39.30%	38.80%	39.99%	39.94%	40.00%	40.69%	40.70%	42.27%	44.37%							
4) Fail bad	0.00%	0.01%	0.20%	0.20%	0.20%	0.20%	0.27%	0.26%	0.29%	0.29%	0.29%	0.29%	0.24%	0.27%	0.27%	0.39%	0.39%	0.40%	0.40%	0.40%	0.39%	0.38%	0.40%	0.38%	0.39%	0.40%	0.39%	0.38%	0.38%	0.38%	0.38%	0.40%	0.37%	0.37%	0.38%	0.39%	0.40%	0.40%	0.39%	0.39%	0.40%	0.39%	0.39%	0.39%	0.39%	0.39%	0.39%	0.39%	0.39%	0.39%	0.39%	0.39%	0.39%	0.39%						
5) TempError reversed	0.00%	0.00%	0.00%	0.00%	0.00%	0.00%	0.00%	0.00%	0.00%	0.00%	0.00%	0.00%	0.00%	0.00%	0.00%	0.00%	0.00%	0.00%	0.00%	0.00%	0.00%	0.00%	0.00%	0.00%	0.00%	0.00%	0.00%	0.00%	0.00%	0.00%	0.00%	0.00%	0.00%	0.00%	0.00%	0.00%	0.00%	0.00%	0.00%	0.00%	0.00%	0.00%	0.00%	0.00%	0.00%	0.00%	0.00%	0.00%	0.00%	0.00%	0.00%	0.00%	0.00%							
6) PermError no key	0.00%	0.00%	0.00%	0.00%	0.25%	0.87%	1.21%	1.67%	0.98%	1.08%	1.22%	1.34%	1.52%	1.32%	1.27%	1.40%	1.41%	1.38%	1.84%	1.76%	0.97%	1.00%	1.21%	1.29%	1.36%	1.68%	1.92%	1.51%	1.42%	1.34%	1.62%	1.54%	1.04%	1.08%	1.03%	1.09%	1.09%	1.09%	1.07%	1.47%	1.47%	1.22%	1.22%	1.63%	1.51%	1.96%	1.34%	1.43%	1.57%	1.08%	1.11%	1.23%	1.02%	0.84%						



* With cooperation of domestic ISP 5 companies, MIC compiled.
 * In the E-mail which is circulating.

