

# PATHWAY TO SUSTAINABLE WASTE MANAGEMENT IN FIJI: A STUDY OF JAPAN'S BEST PRACTICES



## Examples of how you can exercise it in your daily life!



Recycling is not applicable to everything.  
The first step "Reduce" is the most important.

Check first before you select a product.



- Is it durable?
- Can it be refilled?
- What about recycled products?
- Am I buying too much?

Tips for reducing waste in daily life.



- Eat all your food.

Wait! Before you throw it away...



- Can I use it for another purpose?
- It may be used by someone else.
- It may be used with some other ideas.

If you still end up with waste, observe the rules.



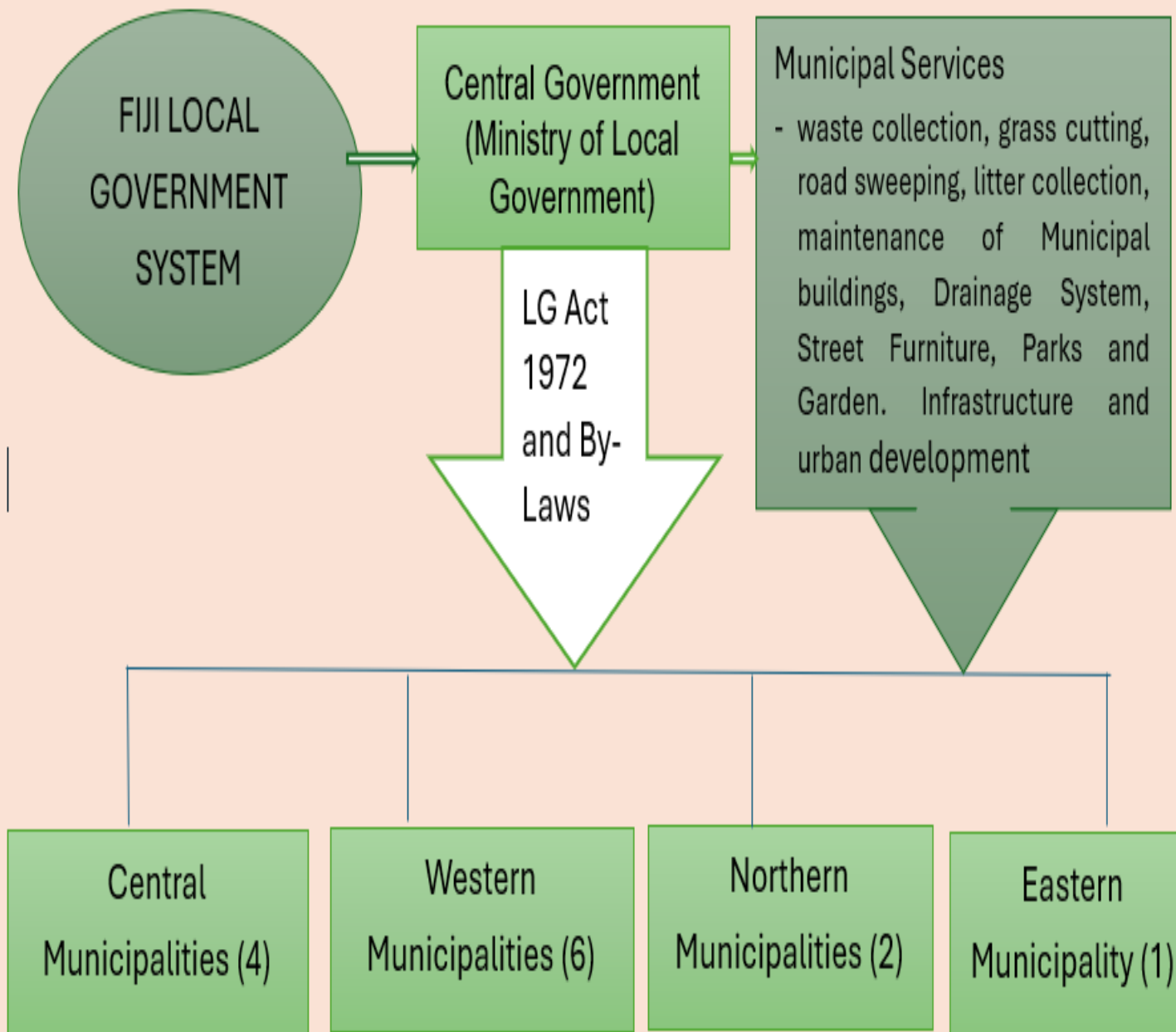
LOCAL  
GOVERNANCE  
IN GLOBAL  
PERSPECTIVES

# CONTENTS

CHALLENGES FACED IN FIJI  
THAT NEED IMPROVEMENT  
- WASTE MANAGEMENT

KEY INSIGHTS FROM JAPAN  
WASTE MANAGEMENT  
SYSTEM

RECOMMENDATIONS FOR  
IMPROVEMENT BACK  
HOME



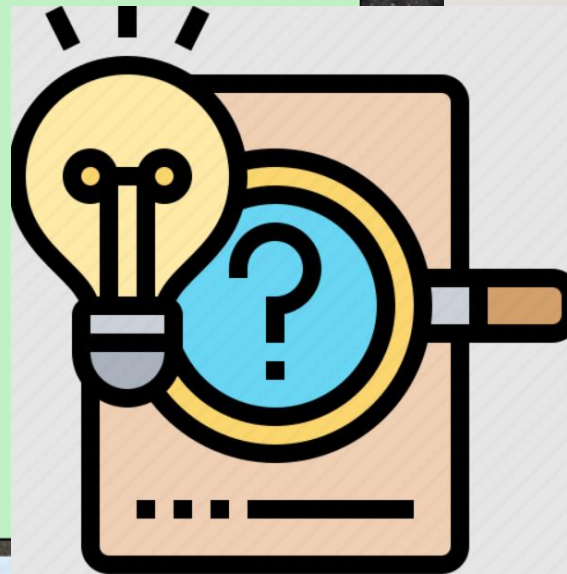


# ISSUES THAT NEED IMPROVEMENT

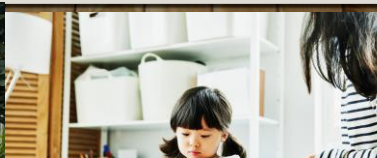
# STUDY QUESTIONS

Waste Management System in Fiji		Challenges	Contributing Factors
- Municipal Councils collect waste (household/plastic/food scraps/industrial/green) from town/city boundaries and designated areas (rural)		- Inadequate waste disposal facilities - Existing dumpsites are not properly maintained - Illegal dumping - Lack of proper waste separation and recycling facilities - Lack of public awareness and civic education - Changing of mindset of the people - Inadequate regulations - Weak penalties - Limited waste infrastructure	- Increase in urban migration - Urban development - Mindset/Behavior of the people
- Waste disposed at the respective dump sites			
- Sorting is done by Municipal workers (not mandatory in some Municipalities)			
- Waste composition done by Municipalities (not mandatory)			

- How to change the behaviour of the people back home?
- What would be the minimum level of infrastructure relevant to Fiji?
- How can Government implement in terms of policy to address Waste Management back home?



Question	Key Insights from Japan
How to change the behaviour of the people back home?	<ul style="list-style-type: none"> <li>- History of Tokyo Waste War</li> <li>- Part of Educational program at lower level (Tachikawa City Second Elementary School)</li> <li>- Proper disposal of waste taught basically at home</li> <li>- Waste separation educational program (Witnessed in convenience stores, in city areas (Tokyo/Nagoya), schools, parks train stations</li> <li>- More collaboration with communities/schools/stakeholders (Yokohama City Code for Collaboration), Japan's Theory of Collaboration, Collaboration Law</li> </ul>

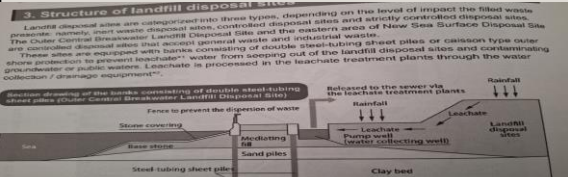


## Question

## Key Insights from Japan

What would be the minimum level of infrastructure relevant to Fiji?

- Lessons of the Suginami Incineration Plant with future generations (Clean Authority of Tokyo) Waste to Energy-benefits
- Recycling Facilities (Basic Law Promoting the Creation of a Recycling Oriented Society-Japan)
- Structure of landfill disposal sites (Outer Central Landfill Disposal and New Sea Surface Disposal Site, Tokyo Metropolitan Govt)
- Transfer Stations

[illegible]



Question	Key Insights from Japan
<p>How can Government implement in terms of policy to address Waste Management back home?</p>	<p>[Japan - Legislation and Government Policy Pertaining to Waste)</p> <ul style="list-style-type: none"> <li>▪ Regulations and enforcement</li> <li>▪ To formulate regulations based on the basic law of promoting the creation of a Recycling oriented society in Japan</li> <li>▪ High penalty for illegal dumping</li> <li>▪ Waste separation in Primary schools, homes, communities and companies</li> <li>▪ To incorporate 3Rs in the regulation as mandatory (all organisations, schools and communities)</li> <li>▪ Methods of landfill disposal (Mandatory) – Tokyo Metropolitan Govt</li> <li>▪ Strong public awareness and civic education – Regulated</li> <li>▪ Roles and responsibilities of each entity</li> </ul>

# RECOMMENDATIONS/WAY FORWARD

- ▶ To formulate regulations based on the basic law of promoting the creation of a Recycling oriented society in Japan
- ▶ High penalty for illegal dumping
- ▶ Waste separation in Primary schools, homes, communities and companies should be mandatory
- ▶ Strengthen 3Rs in the regulation as mandatory
- ▶ Methods of landfill disposal
- ▶ Strong public awareness and civic education should be mandatory through regulation
- ▶ Collaboration Law
- ▶ Strengthen regulations and enforcement
- ▶ Long Term Solution – Incineration Plant (might be challenging – costly)

