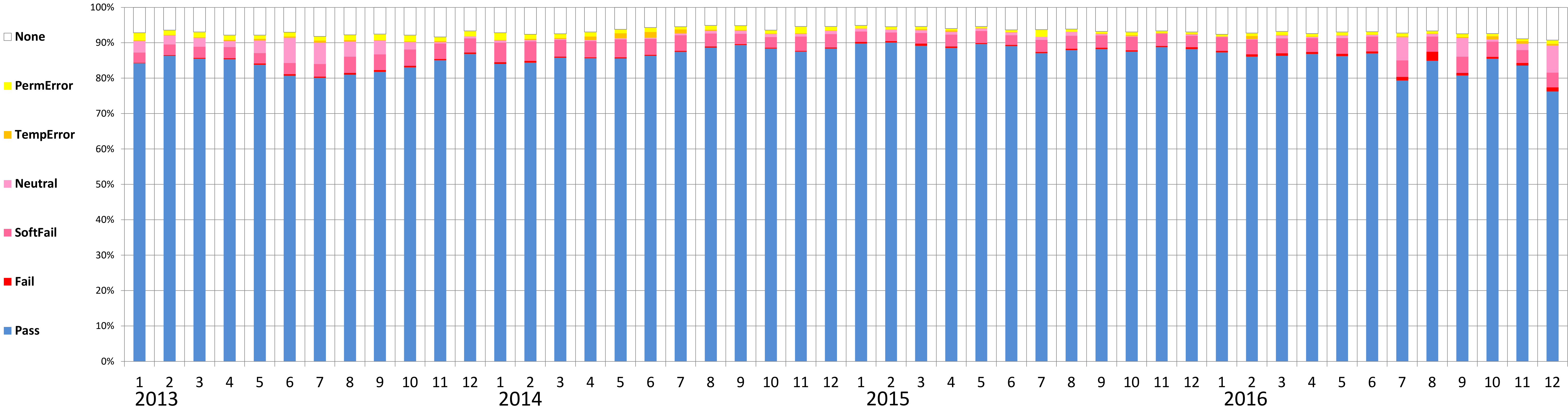


送信ドメイン認証結果の集計(SPF)(2025年3月時点)

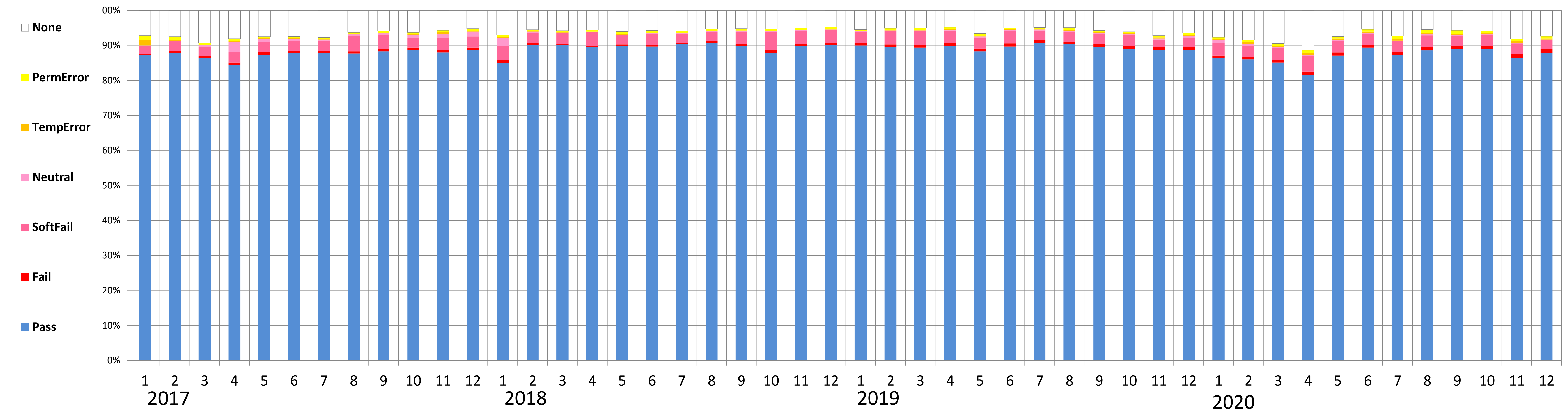
	2013年												2014年												2015年												2016年											
	1月	2月	3月	4月	5月	6月	7月	8月	9月	10月	11月	12月	1月	2月	3月	4月	5月	6月	7月	8月	9月	10月	11月	12月	1月	2月	3月	4月	5月	6月	7月	8月	9月	10月	11月	12月	1月	2月	3月	4月	5月	6月	7月	8月	9月	10月	11月	12月
The number of data ISP	7	7	7	7	7	7	7	7	7	7	7	7	7	7	7	7	7	7	7	7	7	7	7	7	7	7	7	7	7	7	7	7	7	7	7	7	7	7	7	7	7	7	7	7	7	7	7	7
the ratio of SPF																																																
① None	7.13%	6.39%	6.96%	7.79%	7.84%	7.04%	8.18%	7.76%	7.53%	7.82%	8.31%	6.66%	7.18%	7.58%	7.47%	6.92%	6.21%	5.69%	5.42%	5.10%	5.16%	6.40%	5.40%	5.39%	5.07%	5.47%	5.41%	5.97%	5.39%	6.33%	6.29%	6.14%	6.81%	6.89%	6.65%	6.94%	7.58%	7.26%	6.77%	7.34%	6.95%	6.86%	7.20%	6.64%	7.48%	7.35%	8.84%	9.26%
② Neutral	3.22%	2.47%	2.45%	1.59%	3.56%	7.08%	6.01%	4.29%	3.85%	2.20%	0.38%	0.55%	0.64%	0.39%	0.21%	0.33%	0.36%	0.28%	0.51%	0.78%	0.90%	0.78%	0.70%	0.93%	0.78%	0.83%	0.84%	0.77%	0.74%	0.82%	0.83%	1.01%	0.37%	0.19%	0.15%	0.39%	0.11%	0.13%	0.82%	0.28%	0.72%	0.47%	6.56%	0.69%	5.30%	0.72%	1.74%	7.64%
③ Pass	84.24%	86.36%	85.52%	85.35%	83.83%	80.66%	80.11%	80.99%	81.78%	83.04%	85.08%	86.88%	84.04%	84.37%	85.78%	85.63%	85.59%	86.32%	87.43%	88.62%	89.37%	88.37%	87.52%	88.40%	89.84%	90.12%	89.13%	88.58%	89.64%	89.09%	87.08%	87.93%	88.26%	87.50%	88.78%	88.29%	87.31%	86.10%	86.33%	86.85%	86.28%	87.01%	79.37%	84.92%	80.74%	85.54%	83.60%	76.26%
④ Fail	0.19%	0.19%	0.21%	0.27%	0.38%	0.49%	0.39%	0.52%	0.51%	0.46%	0.33%	0.42%	0.55%	0.52%	0.36%	0.28%	0.33%	0.30%	0.32%	0.34%	0.30%	0.25%	0.24%	0.32%	0.42%	0.39%	0.70%	0.42%	0.35%	0.33%	0.35%	0.42%	0.36%	0.39%	0.33%	0.47%	0.42%	0.69%	0.72%	0.61%	0.65%	0.61%	1.06%	2.61%	0.79%	0.51%	0.74%	1.15%
⑤ SoftFail	2.84%	3.05%	3.16%	3.26%	2.92%	3.21%	3.52%	4.58%	4.49%	4.58%	4.43%	3.96%	5.44%	5.52%	4.69%	4.54%	5.05%	4.51%	4.44%	3.66%	2.91%	3.05%	4.08%	3.74%	2.96%	2.43%	2.95%	3.37%	3.34%	2.73%	3.40%	3.68%	3.45%	3.84%	3.43%	3.27%	3.90%	4.13%	4.27%	3.93%	4.41%	4.18%	4.62%	4.30%	4.56%	4.26%	3.62%	4.15%
⑥ TempError	0.23%	0.18%	0.22%	0.36%	0.43%	0.40%	0.58%	0.38%	0.13%	0.16%	0.30%	0.09%	0.19%	0.33%	0.31%	1.00%	1.35%	1.64%	1.11%	0.37%	0.19%	0.18%	0.10%	0.12%	0.06%	0.30%	0.40%	0.11%	0.08%	0.06%	0.10%	0.16%	0.26%	0.13%	0.11%	0.18%	0.91%	0.11%	0.14%	0.11%	0.11%	0.28%	0.13%	0.26%	0.84%	0.76%	0.52%	
⑦ PermError	2.15%	1.36%	1.48%	1.37%	1.03%	1.13%	1.20%	1.48%	1.69%	1.74%	1.18%	1.44%	1.97%	1.29%	1.17%	1.28%	1.11%	1.25%	0.76%	1.13%	1.18%	0.96%	1.87%	1.11%	0.80%	0.70%	0.68%	0.50%	0.43%	0.62%	1.98%	0.71%	0.58%	0.93%	0.53%	0.53%	0.50%	0.77%	0.97%	0.84%	0.88%	0.78%	0.92%	0.71%	0.87%	0.77%	0.70%	1.03%



※出典：電気通信事業者9社の協力により、総務省がとりまとめ

送信ドメイン認証結果の集計(SPF)(2025年3月時点)

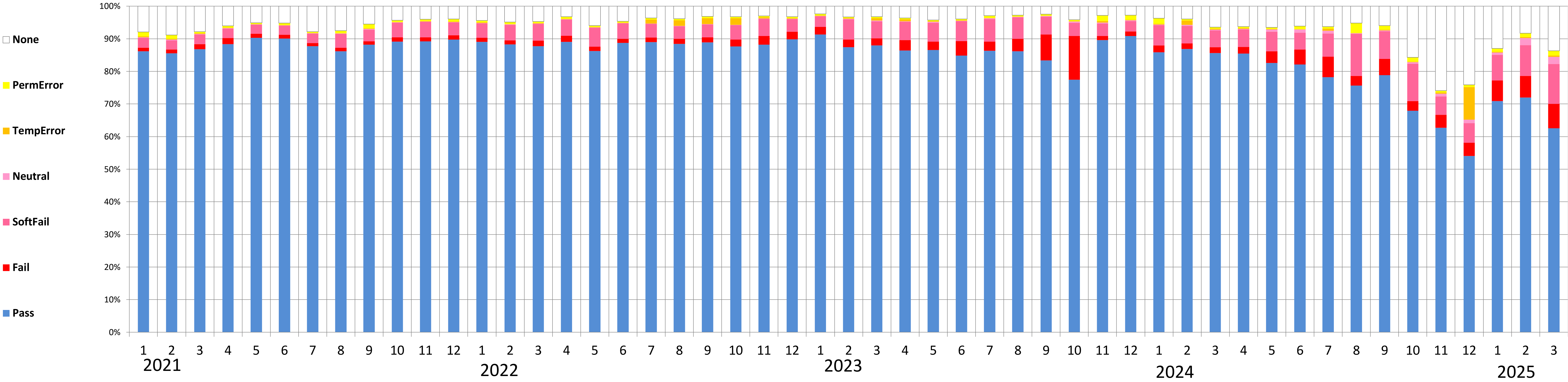
	2017年												2018年												2019年												2020年											
	1月	2月	3月	4月	5月	6月	7月	8月	9月	10月	11月	12月	1月	2月	3月	4月	5月	6月	7月	8月	9月	10月	11月	12月	1月	2月	3月	4月	5月	6月	7月	8月	9月	10月	11月	12月	1月	2月	3月	4月	5月	6月	7月	8月	9月	10月	11月	12月
The number of data ISP	7	7	7	7	7	7	7	7	7	7	7	7	7	7	7	7	7	7	7	7	7	7	7	7	7	7	7	7	7	7	7	7	7	7	7	7	7	7	7	7	7	7	7	7	7	7	7	
the ratio of SPF																																																



※出典: 電気通信事業者9社の協力により、総務省がとりまとめ

送信ドメイン認証結果の集計(SPF)(2025年3月時点)

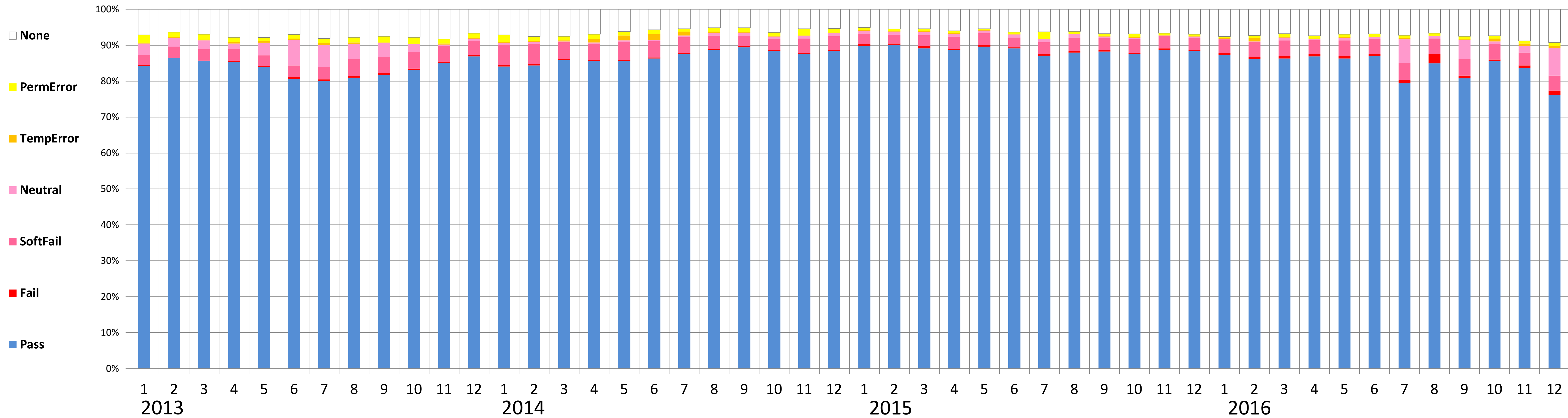
	2021年												2022年												2023年												2024年												2025年		
	1月	2月	3月	4月	5月	6月	7月	8月	9月	10月	11月	12月	1月	2月	3月	4月	5月	6月	7月	8月	9月	10月	11月	12月	1月	2月	3月	4月	5月	6月	7月	8月	9月	10月	11月	12月	1月	2月	3月												
The number of data ISP	7	7	7	8	8	8	8	8	8	9	9	9	9	9	9	9	9	9	9	9	9	9	9	9	9	9	9	9	9	9	9	9	9	9	9	9	9	9	9	9	9	9	9	9	9	9	9	9	9		
the ratio of SPF																																																			
① None	7.93%	8.85%	7.82%	6.04%	5.08%	5.21%	7.83%	7.53%	5.49%	4.29%	4.01%	3.96%	4.39%	4.86%	4.71%	3.21%	5.94%	4.61%	3.61%	3.82%	3.15%	3.23%	3.00%	3.27%	2.38%	3.31%	3.24%	3.59%	4.28%	3.94%	2.95%	2.78%	2.46%	4.21%	2.83%	2.76%	3.69%	3.97%	6.43%	6.25%	6.52%	6.10%	6.27%	5.17%	5.93%	15.74%	25.94%	24.16%	12.97%	8.31%	13.72%
② Neutral	0.19%	0.17%	0.19%	0.14%	0.07%	0.07%	0.06%	0.06%	0.20%	0.07%	0.07%	0.09%	0.09%	0.12%	0.09%	0.07%	0.08%	0.07%	0.10%	0.07%	0.13%	0.08%	0.07%	0.14%	0.08%	0.14%	0.24%	0.13%	0.33%	0.12%	0.26%	0.18%	0.24%	0.40%	0.32%	0.28%	0.18%	0.32%	0.24%	0.14%	0.67%	0.96%	0.85%	0.13%	0.18%	0.47%	0.85%	1.12%	0.71%	2.18%	2.17%
③ Pass	86.15%	85.57%	86.78%	88.37%	90.31%	90.05%	87.75%	86.16%	88.17%	89.14%	89.22%	89.72%	89.05%	88.30%	87.75%	89.04%	86.23%	88.71%	88.96%	88.40%	88.92%	87.67%	88.21%	89.80%	91.29%	87.44%	87.99%	86.39%	86.55%	84.87%	86.31%	86.19%	83.38%	77.43%	89.61%	90.82%	85.87%	86.89%	85.59%	85.48%	82.57%	82.12%	78.22%	75.67%	78.81%	67.89%	62.72%	54.08%	70.88%	71.95%	62.58%
④ Fail	1.08%	1.11%	1.53%	1.82%	1.25%	1.15%	0.92%	1.09%	1.01%	1.32%	1.19%	1.32%	1.23%	1.19%	1.71%	1.90%	1.30%	1.26%	1.37%	1.59%	1.55%	2.06%	2.63%	2.34%	2.38%	2.32%	2.19%	3.22%	2.58%	4.38%	2.85%	3.80%	7.96%	13.43%	1.22%	1.41%	2.06%	1.68%	1.80%	2.00%	3.56%	4.57%	6.32%	2.95%	4.99%	3.03%	3.97%	3.99%	6.29%	6.62%	7.45%
⑤ SoftFail	3.05%	2.86%	2.98%	2.90%	2.75%	2.85%	2.95%	4.28%	3.64%	4.54%	4.77%	4.00%	4.44%	4.82%	5.12%	4.98%	5.85%	4.79%	4.24%	3.89%	3.93%	4.44%	5.28%	3.90%	3.28%	6.25%	5.15%	5.60%	5.77%	6.15%	6.91%	6.57%	5.42%	4.02%	3.83%	3.20%	6.27%	5.39%	5.16%	5.41%	6.05%	5.20%	7.07%	12.91%	8.55%	11.39%	5.60%	6.00%	7.93%	9.43%	12.26%
⑥ TempError	0.31%	0.24%	0.19%	0.17%	0.12%	0.08%	0.07%	0.15%	0.12%	0.07%	0.15%	0.17%	0.22%	0.12%	0.15%	0.17%	0.14%	0.15%	1.19%	1.70%	1.73%	2.03%	0.41%	0.09%	0.10%	0.16%	0.76%	0.62%	0.11%	0.13%	0.06%	0.05%	0.05%	0.07%	0.43%	0.14%	0.17%	1.28%	0.31%	0.19%	0.19%	0.11%	0.62%	0.10%	0.24%	0.22%	0.42%	9.97%	0.17%	0.32%	0.34%
⑦ PermError	1.28%	1.19%	0.51%	0.57%	0.41%	0.59%	0.42%	0.74%	1.36%	0.56%	0.58%	0.74%	0.58%	0.60%	0.46%	0.62%	0.46%	0.40%	0.52%	0.54%	0.59%	0.50%	0.39%	0.46%	0.50%	0.37%	0.43%	0.45%	0.37%	0.41%	0.67%	0.42%	0.49%	0.44%	1.76%	1.40%	1.77%	0.47%	0.47%	0.53%	0.45%	0.95%	0.65%	3.07%	1.31%	1.26%	0.50%	0.69%	1.05%	1.19%	1.48%



※出典: 電気通信事業者9社の協力により、総務省がとりまとめ

The situation of SPF (as of March 2025)

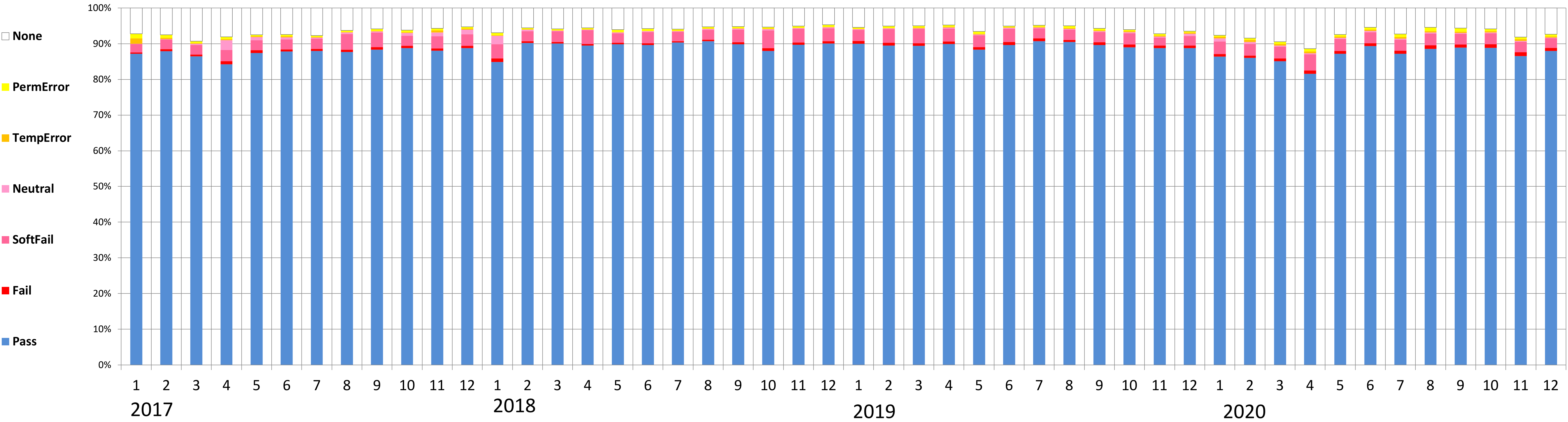
	2013年												2014年												2015年												2016年											
	1月	2月	3月	4月	5月	6月	7月	8月	9月	10月	11月	12月	1月	2月	3月	4月	5月	6月	7月	8月	9月	10月	11月	12月	1月	2月	3月	4月	5月	6月	7月	8月	9月	10月	11月	12月	1月	2月	3月	4月	5月	6月	7月	8月	9月	10月	11月	12月
The number of data ISP	7	7	7	7	7	7	7	7	7	7	7	7	7	7	7	7	7	7	7	7	7	7	7	7	7	7	7	7	7	7	7	7	7	7	7	7	7	7	7	7	7	7	7	7	7	7	7	7
the ratio of SPF																																																
① None	7.13%	6.39%	6.96%	7.79%	7.84%	7.04%	8.18%	7.76%	7.53%	7.82%	8.31%	6.66%	7.18%	7.58%	7.47%	6.92%	6.21%	5.69%	5.42%	5.10%	5.16%	6.40%	5.40%	5.39%	5.07%	5.47%	5.41%	5.97%	5.39%	6.33%	6.29%	6.14%	6.81%	6.89%	6.65%	6.94%	7.58%	7.26%	6.77%	7.34%	6.95%	6.86%	7.20%	6.64%	7.48%	7.35%	8.84%	9.26%
② Neutral	3.22%	2.47%	2.45%	1.59%	3.56%	7.08%	6.01%	4.29%	3.85%	2.20%	0.38%	0.55%	0.64%	0.39%	0.21%	0.33%	0.36%	0.28%	0.51%	0.78%	0.90%	0.78%	0.70%	0.93%	0.78%	0.83%	0.84%	0.77%	0.74%	0.82%	0.83%	1.01%	0.37%	0.19%	0.15%	0.39%	0.11%	0.13%	0.82%	0.28%	0.72%	0.47%	6.56%	0.69%	5.30%	0.72%	1.74%	7.64%
③ Pass	84.24%	86.36%	85.52%	85.35%	83.83%	80.66%	80.11%	80.99%	81.78%	83.04%	85.08%	86.88%	84.04%	84.37%	85.78%	85.63%	85.59%	86.32%	87.43%	88.62%	89.37%	88.37%	87.52%	88.40%	89.84%	90.12%	89.13%	88.58%	89.64%	89.09%	87.08%	87.93%	88.26%	87.50%	88.78%	88.29%	87.31%	86.10%	86.33%	86.85%	86.28%	87.01%	79.37%	84.92%	80.74%	85.54%	83.60%	76.26%
④ Fail	0.19%	0.19%	0.21%	0.27%	0.38%	0.49%	0.39%	0.52%	0.51%	0.46%	0.33%	0.42%	0.55%	0.52%	0.36%	0.28%	0.33%	0.30%	0.32%	0.34%	0.30%	0.25%	0.24%	0.32%	0.42%	0.39%	0.70%	0.42%	0.35%	0.33%	0.35%	0.42%	0.36%	0.39%	0.33%	0.47%	0.42%	0.69%	0.72%	0.61%	0.65%	0.61%	1.06%	2.61%	0.79%	0.51%	0.74%	1.15%
⑤ SoftFail	2.84%	3.05%	3.16%	3.26%	2.92%	3.21%	3.52%	4.58%	4.49%	4.58%	4.43%	3.96%	5.44%	5.52%	4.69%	4.54%	5.05%	4.51%	4.44%	3.66%	2.91%	3.05%	4.08%	3.74%	2.96%	2.43%	2.95%	3.37%	3.34%	2.73%	3.40%	3.68%	3.45%	3.84%	3.43%	3.27%	3.90%	4.13%	4.27%	3.93%	4.41%	4.18%	4.62%	4.30%	4.56%	4.26%	3.62%	4.15%
⑥ TempError	0.23%	0.18%	0.22%	0.36%	0.43%	0.40%	0.58%	0.38%	0.13%	0.16%	0.30%	0.09%	0.19%	0.33%	0.31%	1.00%	1.35%	1.64%	1.11%	0.37%	0.19%	0.18%	0.18%	0.10%	0.12%	0.06%	0.30%	0.40%	0.11%	0.08%	0.06%	0.10%	0.16%	0.26%	0.13%	0.11%	0.18%	0.91%	0.11%	0.14%	0.11%	0.11%	0.28%	0.13%	0.26%	0.84%	0.76%	0.52%
⑦ PermError	2.15%	1.36%	1.48%	1.37%	1.03%	1.13%	1.20%	1.48%	1.69%	1.74%	1.18%	1.44%	1.97%	1.29%	1.17%	1.28%	1.11%	1.25%	0.76%	1.13%	1.18%	0.96%	1.87%	1.11%	0.80%	0.70%	0.68%	0.50%	0.43%	0.62%	1.98%	0.71%	0.58%	0.93%	0.53%	0.53%	0.50%	0.77%	0.97%	0.84%	0.88%	0.78%	0.92%	0.71%	0.87%	0.77%	0.70%	1.03%



* With cooperation of domestic ISP 9 companies, MIC compiled.
* In the E-mail which is circulating.

The situation of SPF (as of March 2025)

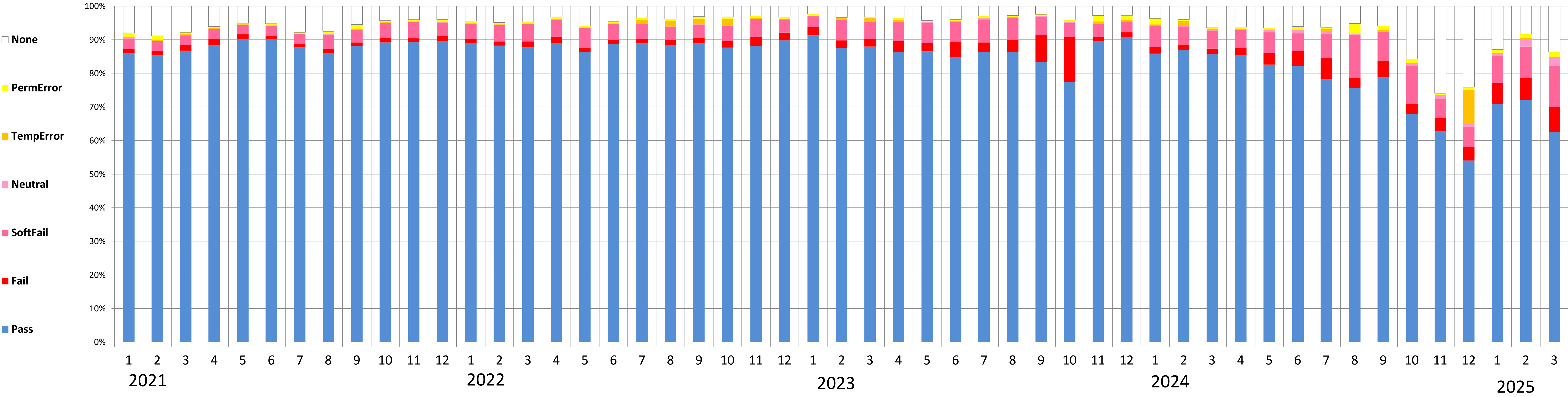
	2017年												2018年												2019年												2020年											
	1月	2月	3月	4月	5月	6月	7月	8月	9月	10月	11月	12月	1月	2月	3月	4月	5月	6月	7月	8月	9月	10月	11月	12月	1月	2月	3月	4月	5月	6月	7月	8月	9月	10月	11月	12月	1月	2月	3月	4月	5月	6月	7月	8月	9月	10月	11月	12月
The number of data ISP	7	7	7	7	7	7	7	7	7	7	7	7	7	7	7	7	7	7	7	7	7	7	7	7	7	7	7	7	7	7	7	7	7	7	7	7	7	7	7	7	7	7	7	7	7	7	7	7
the ratio of SPF																																																
① None	7.24%	7.52%	9.28%	8.09%	7.48%	7.45%	7.70%	6.26%	5.86%	6.24%	5.69%	5.26%	6.95%	5.54%	5.83%	5.57%	6.04%	5.76%	5.89%	5.30%	5.23%	5.32%	5.04%	4.73%	5.44%	5.09%	5.00%	4.80%	6.60%	5.04%	4.87%	4.97%	5.72%	6.07%	7.19%	6.47%	7.62%	8.46%	9.48%	11.36%	7.43%	5.41%	7.30%	5.46%	5.67%	5.86%	8.12%	7.33%
② Neutral	0.06%	0.12%	0.37%	2.76%	0.89%	0.60%	0.34%	0.48%	0.31%	0.79%	1.06%	1.35%	2.35%	0.44%	0.16%	0.14%	0.17%	0.22%	0.17%	0.25%	0.28%	0.35%	0.23%	0.24%	0.19%	0.20%	0.17%	0.24%	0.26%	0.26%	0.23%	0.22%	0.24%	0.27%	0.24%	0.61%	0.87%	0.62%	0.26%	0.31%	0.28%	0.30%	0.30%	0.30%	0.24%	0.24%	0.25%	0.16%
③ Pass	87.18%	87.90%	86.45%	84.24%	87.37%	87.82%	87.95%	87.68%	88.29%	88.76%	88.00%	88.75%	84.86%	90.17%	90.05%	89.50%	89.84%	89.64%	90.34%	90.72%	89.80%	87.95%	89.72%	90.01%	89.99%	89.48%	89.40%	89.92%	88.31%	89.64%	90.72%	90.46%	89.62%	89.00%	88.75%	88.74%	86.37%	86.01%	85.10%	81.57%	87.14%	89.36%	87.16%	88.54%	88.89%	88.84%	86.49%	87.96%
④ Fail	0.35%	0.56%	0.47%	0.82%	0.81%	0.60%	0.56%	0.63%	0.76%	0.62%	0.70%	0.65%	1.01%	0.53%	0.40%	0.38%	0.42%	0.44%	0.36%	0.43%	0.60%	0.81%	0.58%	0.68%	0.77%	0.76%	0.71%	0.69%	0.75%	0.87%	0.78%	0.60%	0.78%	0.76%	0.73%	0.75%	0.72%	0.64%	0.76%	0.93%	0.84%	0.78%	0.87%	1.01%	0.86%	0.95%	1.08%	0.88%
⑤ SoftFail	2.39%	2.73%	2.71%	3.16%	2.78%	2.75%	2.88%	4.37%	4.06%	2.84%	3.38%	3.22%	3.98%	2.81%	3.06%	3.88%	2.69%	3.20%	2.66%	2.72%	3.50%	4.97%	3.84%	3.63%	3.09%	3.84%	4.01%	3.62%	3.25%	3.63%	2.79%	2.86%	2.85%	3.17%	2.25%	2.65%	3.50%	3.22%	3.34%	4.49%	3.37%	3.11%	3.10%	3.29%	3.00%	3.14%	2.95%	2.69%
⑥ TempError	1.51%	0.36%	0.13%	0.27%	0.18%	0.29%	0.10%	0.15%	0.17%	0.16%	0.61%	0.25%	0.18%	0.09%	0.05%	0.09%	0.15%	0.09%	0.08%	0.08%	0.08%	0.14%	0.09%	0.13%	0.12%	0.10%	0.20%	0.21%	0.22%	0.19%	0.20%	0.23%	0.25%	0.29%	0.33%	0.36%	0.46%	0.57%	0.42%	0.54%	0.39%	0.41%	0.42%	0.33%	0.34%	0.32%	0.46%	0.27%
⑦ PermError	1.28%	0.82%	0.60%	0.67%	0.49%	0.49%	0.46%	0.43%	0.55%	0.59%	0.57%	0.52%	0.67%	0.43%	0.45%	0.45%	0.69%	0.64%	0.50%	0.50%	0.50%	0.46%	0.51%	0.58%	0.39%	0.54%	0.51%	0.51%	0.60%	0.36%	0.40%	0.66%	0.55%	0.45%	0.51%	0.42%	0.46%	0.47%	0.65%	0.79%	0.55%	0.64%	0.84%	1.08%	0.99%	0.64%	0.64%	0.70%



* With cooperation of domestic ISP 9 companies, MIC compiled.
* In the E-mail which is circulating.

The situation of SPF (as of March 2025)

	2021年												2022年												2023年												2024年												2025年		
	1月	2月	3月	4月	5月	6月	7月	8月	9月	10月	11月	12月	1月	2月	3月	4月	5月	6月	7月	8月	9月	10月	11月	12月	1月	2月	3月	4月	5月	6月	7月	8月	9月	10月	11月	12月	1月	2月	3月												
The number of data ISP	7	7	7	8	8	8	8	8	8	9	9	9	9	9	9	9	9	9	9	9	9	9	9	9	9	9	9	9	9	9	9	9	9	9	9	9	9	9	9	9	9	9	9	9	9	9	9	9	9		
the ratio of SPF																																																			



* With cooperation of domestic ISP 9 companies, MIC compiled.
* In the E-mail which is circulating.