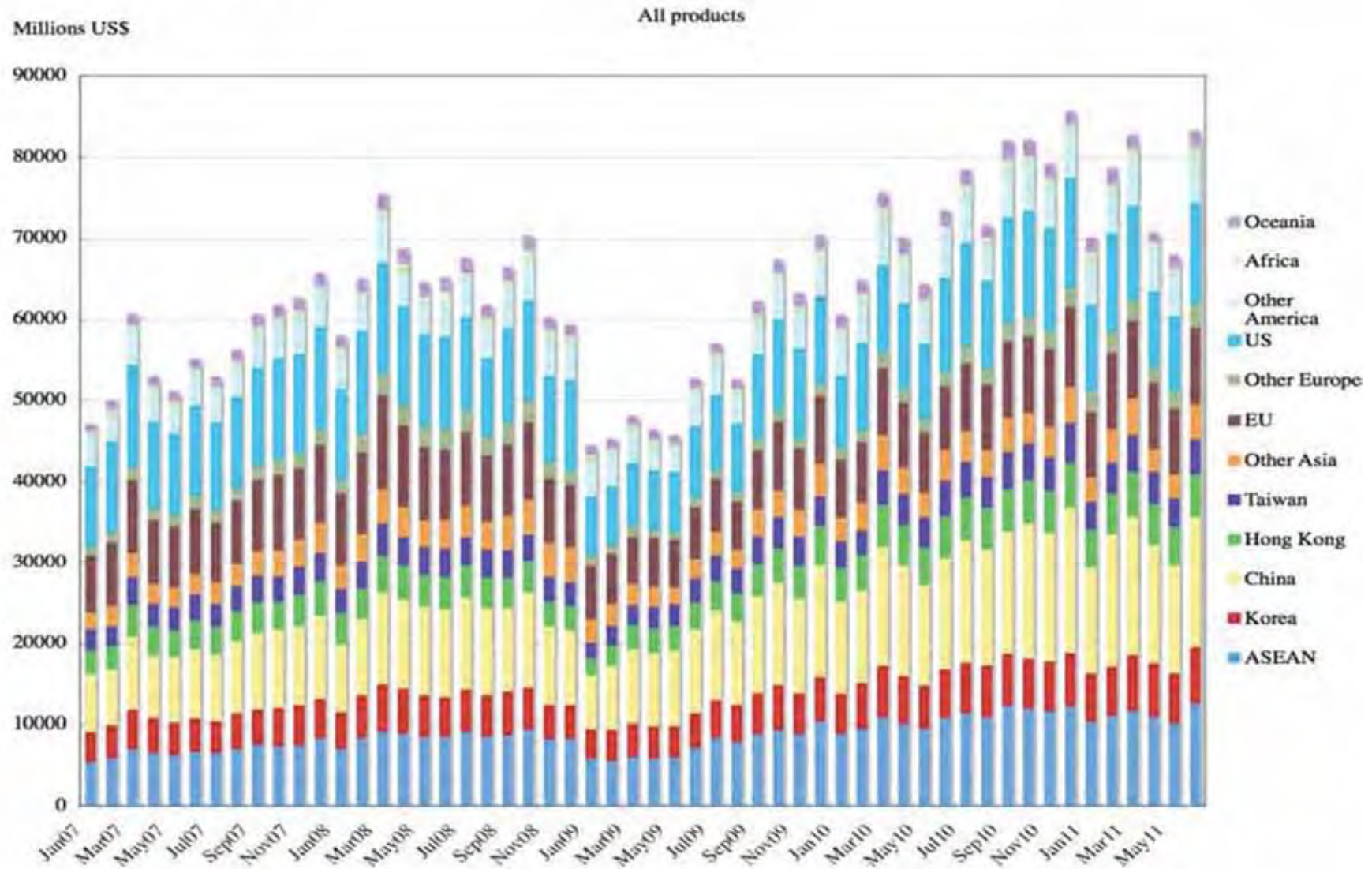


日本の月次輸出額(輸出物価指数で実質化、USDベース)

Figure 1 Japanese exports by region

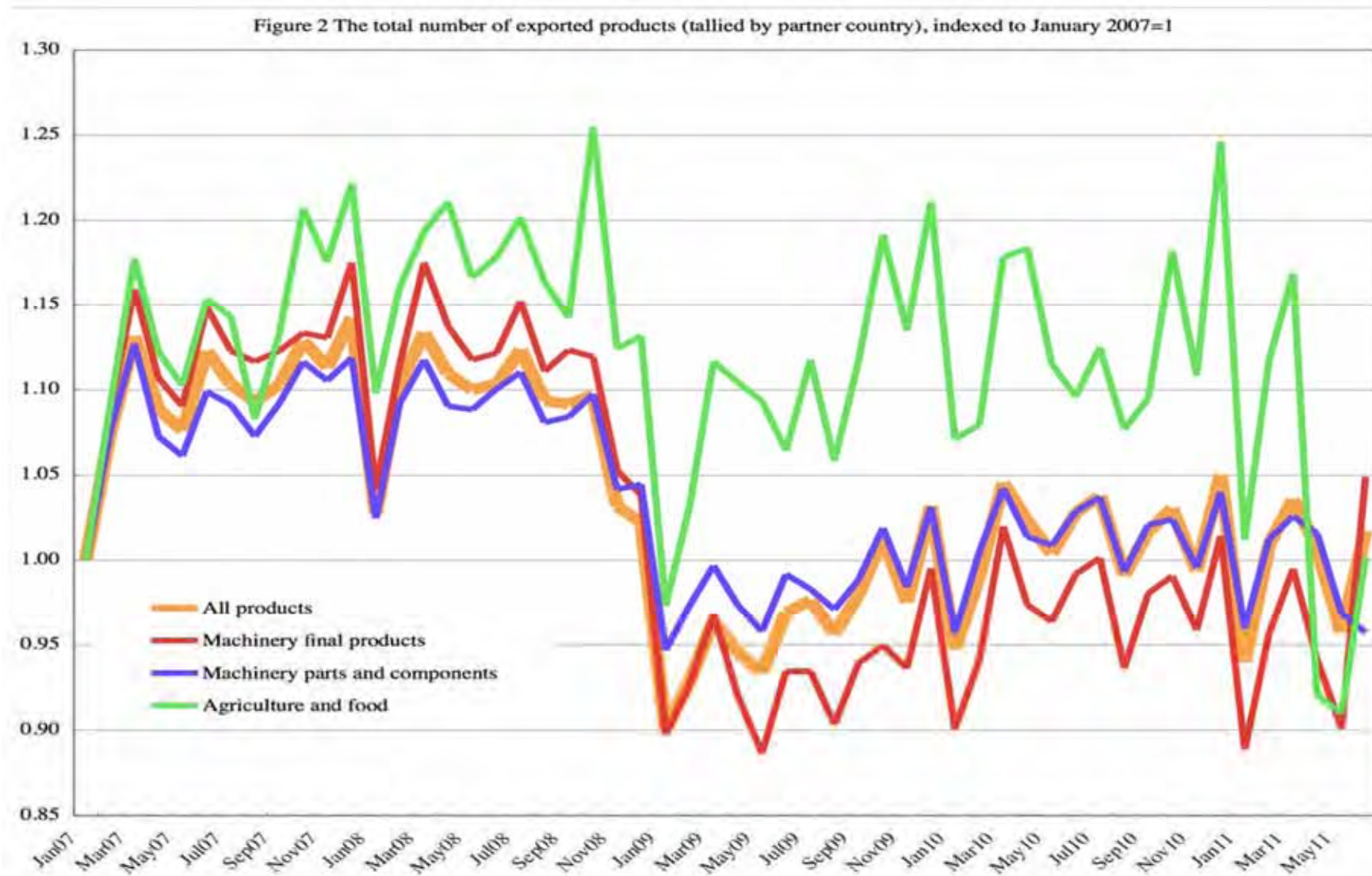


12/06/29

出所: Ando and Kimura (2011b).

18

日本の月次輸出のextensive margin(輸出品目数x輸出先国数)



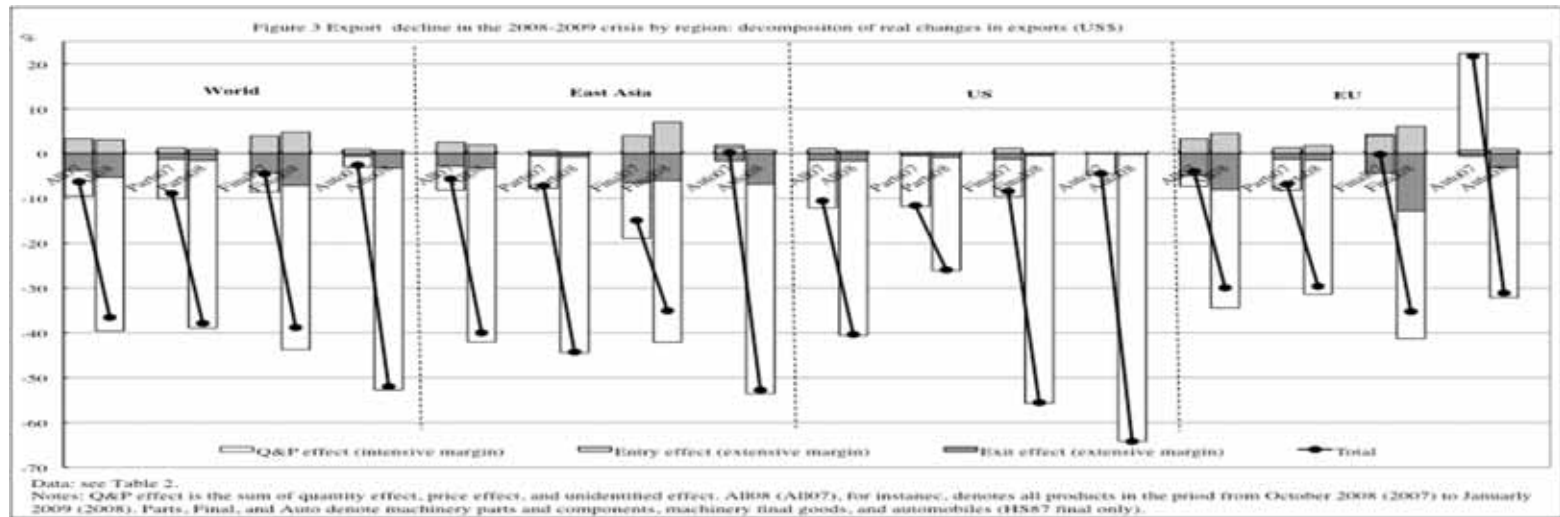
Data: authors' calculation.

出所: Ando and Kimura (2011b).

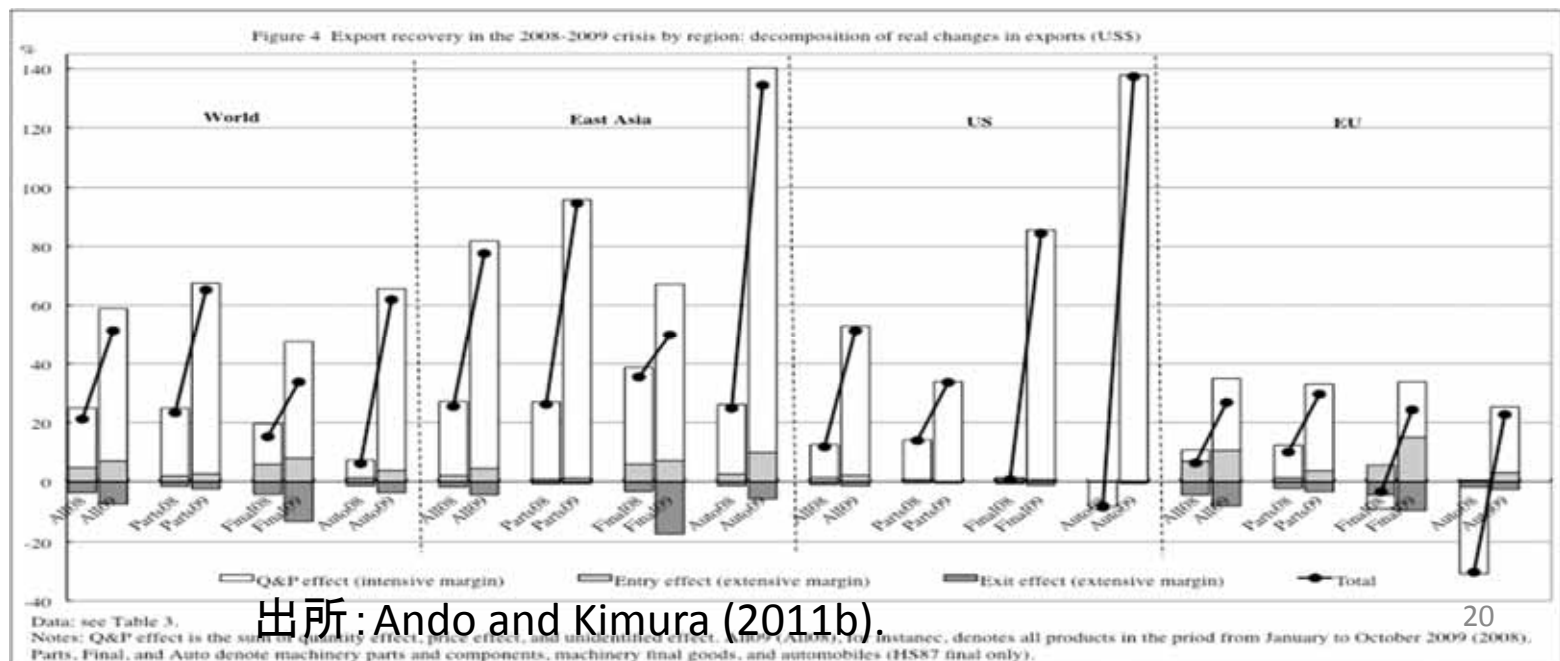
3. Decomposition Analysis: GFC (cont'd)

- Recovery: symmetric to “fall”

<Fall>



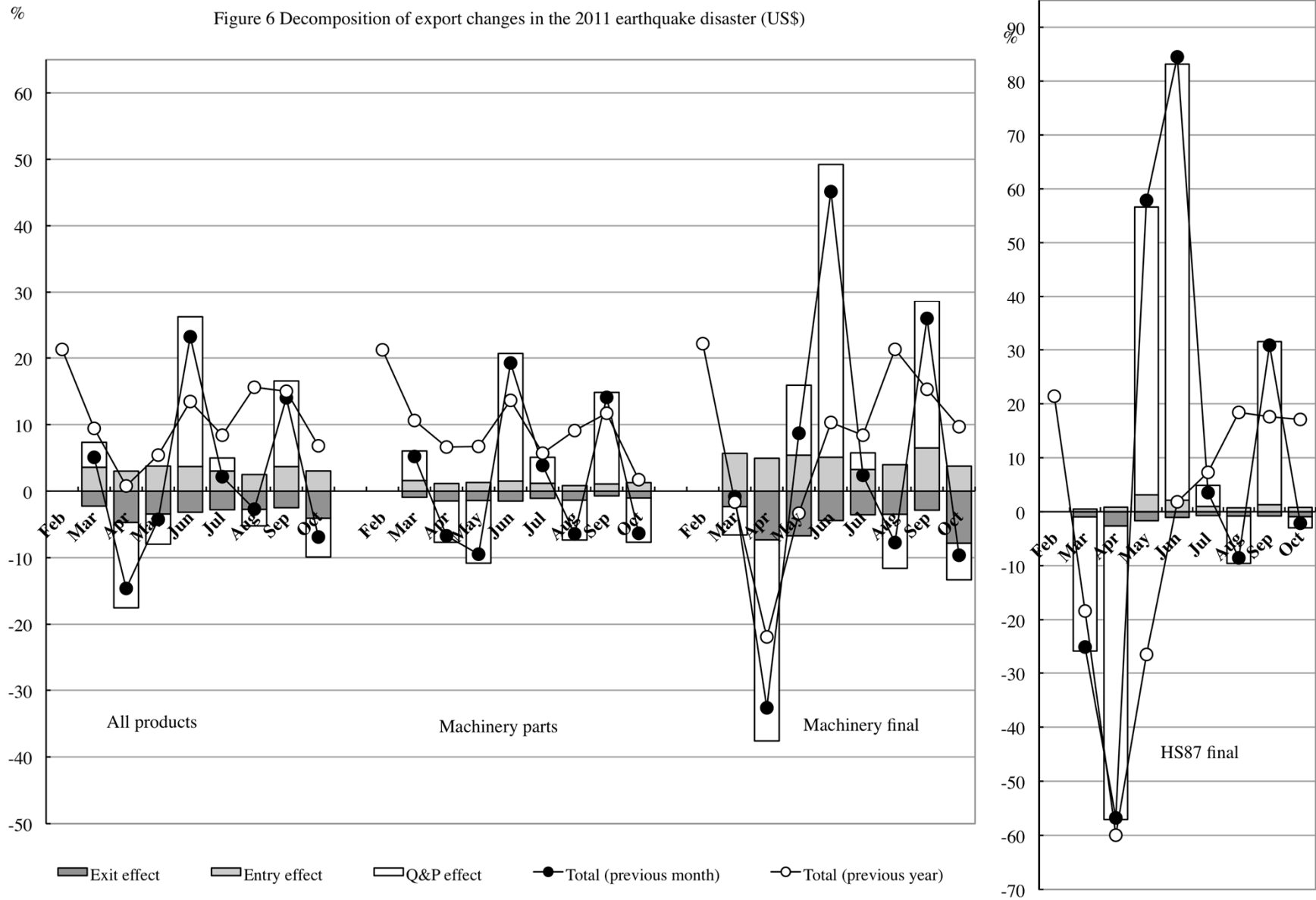
<Recovery>



12/06/29

出所: Ando and Kimura (2011b).

Figure 6 Decomposition of export changes in the 2011 earthquake disaster (US\$)



Data: see Table 6.

Note: Q&P effect is the sum of quantity effect, price effect, and unidentified effect.

12/06/29

出所: Ando and Kimura (2011b).

Table 4 Logit estimation: Japan's machinery exports at GFC

	(Excerpt)			
	Machinery EX		Machinery EX (except HS87)	
	Fall	Recovery	Fall	Recovery
Distance (log)	-0.05	0.10 *	-0.02	0.09
Parts	-0.51 ***	0.28 ***	-0.59 ***	0.33 ***
Korea	-1.37 ***	1.38 ***	-1.52 ***	1.51 ***
China	-1.74 ***	1.20 ***	-1.95 ***	1.43 ***
Taiwan	-1.31 ***	1.05 ***	-1.44 ***	1.13 ***
Hong Kong	-1.35 ***	0.91 ***	-1.39 ***	0.97 ***
Viet Nam	-0.96 ***	1.38 ***	-1.10 ***	1.42 ***
Thailand	-1.53 ***	1.11 ***	-1.67 ***	1.21 ***
Singapore	-1.39 ***	0.68 ***	-1.55 ***	0.77 ***
Malaysia	-0.91 ***	0.92 ***	-1.02 ***	1.00 ***
Brunei	0.88 ***	-0.75 **	1.18 ***	-1.57 ***
Philippines	-0.99 ***	1.03 ***	-1.07 ***	0.99 ***
Indonesia	-0.91 ***	0.86 ***	-1.06 ***	0.92 ***
Cambodia	0.76 ***	0.30	0.57 ***	0.00
Laos	0.53 *	-1.05 **	2.29 ***	-1.35 *
Myanmar	0.35 **	0.12	0.54 ***	-0.03
US	-1.99 ***	0.37 **	-2.22 ***	0.54 ***
EU	-0.53 ***	0.07 *	-0.63 ***	0.12 ***
Constant	0.93 ***	-2.09 ***	0.82 **	-2.15 ***
Log likelihood	-29744	-11949	-25209	-10302
Sample	45979	20507	39546	17930

Table 7 Logit estimation : Japan's machinery exports at EJE

	(Excerpt)			
	Machinery EX		Machinery EX (except HS87)	
	Fall	Recovery	Fall	Recovery
Distance (log)	-0.14 ***	0.11 **	-0.08 **	0.13 **
Parts	-0.47 ***	0.06 *	-0.53 ***	0.13 ***
Korea	-1.88 ***	0.96 ***	-1.91 ***	1.05 ***
China	-2.11 ***	0.89 ***	-2.18 ***	0.98 ***
Taiwan	-1.69 ***	0.95 ***	-1.76 ***	1.18 ***
Hong Kong	-1.58 ***	0.74 ***	-1.63 ***	0.89 ***
Viet Nam	-1.30 ***	0.87 ***	-1.37 ***	1.04 ***
Thailand	-1.76 ***	0.79 ***	-1.90 ***	0.81 ***
Singapore	-1.39 ***	0.77 ***	-1.48 ***	0.84 ***
Malaysia	-1.18 ***	0.77 ***	-1.21 ***	0.83 ***
Brunei	1.02 ***	-0.38	2.07 ***	-0.49
Philippines	-1.18 ***	0.33 **	-1.18 ***	0.47 **
Indonesia	-1.15 ***	0.83 ***	-1.24 ***	0.99 ***
Cambodia	0.43 ***	0.12	0.53 ***	0.23
Laos	0.67 *	-1.79 **	1.28 ***	-2.11 **
Myanmar	0.06	-0.03	0.25	-0.05
US	-1.78 ***	0.52 ***	-1.94 ***	0.58 ***
EU	-0.50 ***	0.14 ***	-0.57 ***	0.19 ***
Constant	1.53 ***	-2.06 ***	1.14 ***	-2.35 ***
	(4.48)	(-3.89)	(3.01)	(-4.04)
Log likelihood	-26132	-9749	-22388	-8507
Sample	41827	16221	36156	14317

3. 国際収支統計と企業国籍

- SNAおよび国際収支統計、居住者概念による純化、所得の帰属に焦点。
- 国際産業連関表、生産の立地に焦点（生産ネットワークについて多くの実証研究あり）。
- 一方、生産は企業によって担われ、その活動は一国の居住者を超えて展開される。
- 企業を1つの経済主体と考え、企業特殊資産（技術、経営ノウハウ、市場アクセスなど）の存在を重視するのであれば、別途、企業国籍ベースの統計体系も構築すべき（Baldwin and Kimura (1998)）。特に東アジアにおいて重要。
- そのためには、FATSに対応する統計を全産業について収集する必要あり（海事の充実？）。

4. 結語

- 経済のグローバル化、とりわけ「第2のアンバンドリング」は、企業活動の把握が鍵。
 - 事業所・企業ベースのマイクロ／パネルデータ
 - 労働関連統計とのリンク
 - 国際貿易統計の企業単位への還元
 - 企業国籍に基づく統計の構築
 - 居住者、立地、企業国籍
- 政策研究、極めて重要。
 - 日本に何を残せるか。空洞化？

参考文献

- Ando, Mitsuyo and Kimura, Fukunari. (2011a) “Globalizing Corporate Activities in East Asia and Impact on Domestic Operations: Further Evidence from Japanese Manufacturing Firms.” RIETI Discussion Paper Series 11-E-034 (March), 2011 (http://www.rieti.go.jp/jp/publications/act_dp2010.html).
- Ando, Mitsuyo and Kimura, Fukunari. (2011b) “How Did the Japanese Exports Respond to Two Crises in the International Production Networks?: The Global Financial Crisis and the East Japan Earthquake.” ERIA Discussion paper Series No.2012-01 (<http://www.eria.org>). Forthcoming in *Asian Economic Journal*.
- Ando, Mitsuyo and Kimura, Fukunari. (2012) “International Production Networks and Domestic Operations by Japanese Manufacturing Firms: Normal Periods and the Global Financial Crisis.” Forthcoming in RIETI Discussion Paper Series.
- Baldwin, Richard. (2011) “21st Century Regionalism: Filling the Gap between 21st Century Trade and 20th Century Trade Rules.” Centre for Economic Policy Research Policy Insight No. 56 (May) (<http://www.cepr.org>).
- Baldwin, Robert E. and Kimura, Fukunari. (1998) “Measuring U.S. International Goods and Services Transactions.” In R. E. Baldwin, R. E. Lipsey, and J. D. Richardson, eds., *Geography and Ownership as Bases for Economic Accounting*, Chicago: The University of Chicago Press: 9-36. The former version was distributed as NBER Working Paper No. 5516, National Bureau of Economic Research, Inc., March 1996. Reprinted in Bernard Hoekman, ed., *The WTO and Trade in Services Volume I*, Cheltenham: Edward Elgar, 2012: 187-214.
- Kimura, Fukunari and Ando, Mitsuyo. (2005) “Two-dimensional Fragmentation in East Asia: Conceptual Framework and Empirics”, *International Review of Economics and Finance* **14**, pp.317-348.
- Kimura, Fukunari and Obashi, Ayako. (2010) “International Production Networks in Machinery Industries: Structure and Its Evolution.” ERIA Discussion Paper ERIA-DP-2010-09 (September) (<http://www.eria.org/publications/discussion.html>).