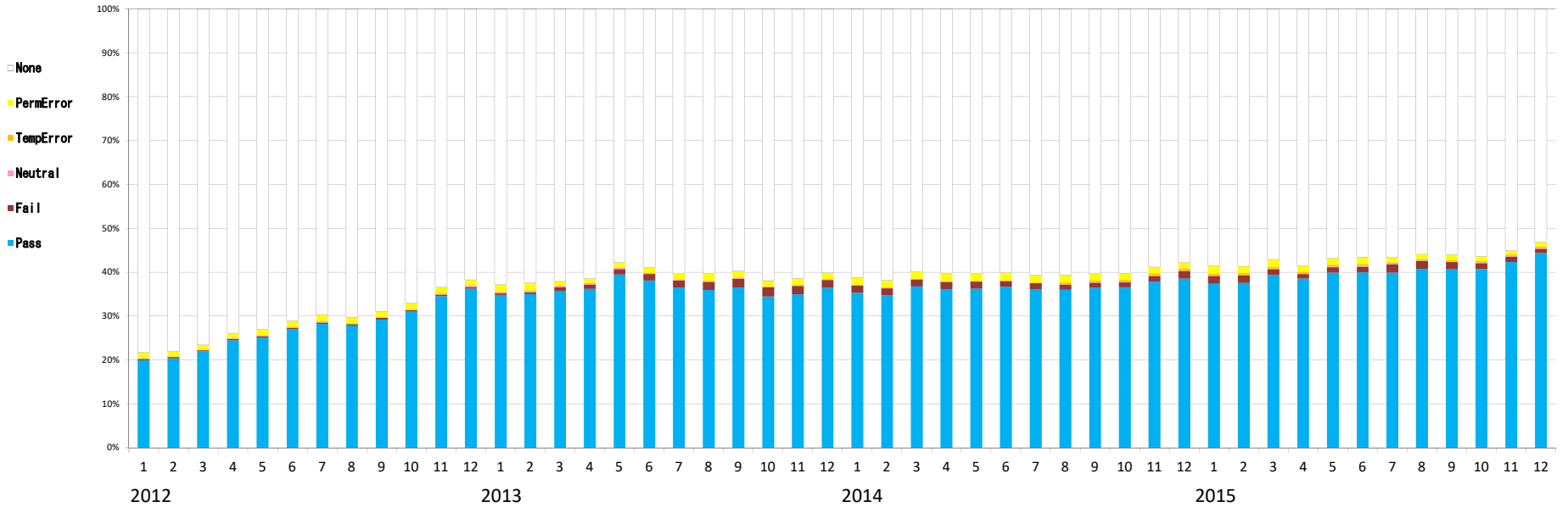


送信ドメイン認証結果の集計(DKIM)(2023年9月時点)

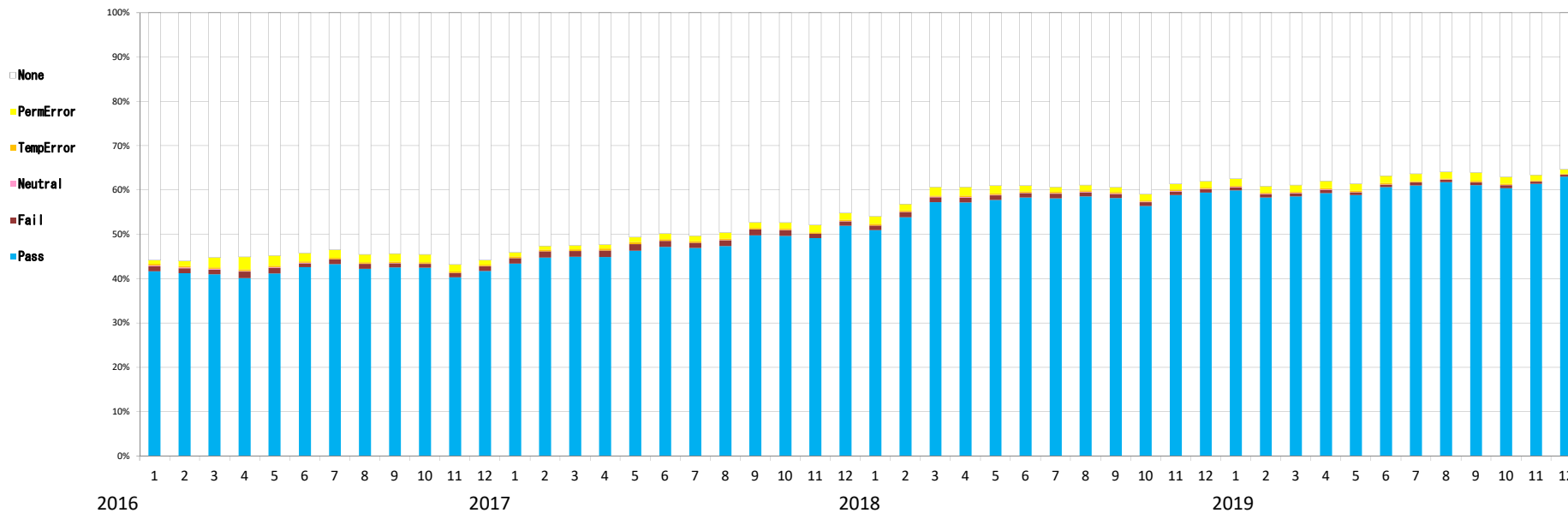
	2012年												2013年												2014年												2015年											
	1月	2月	3月	4月	5月	6月	7月	8月	9月	10月	11月	12月	1月	2月	3月	4月	5月	6月	7月	8月	9月	10月	11月	12月	1月	2月	3月	4月	5月	6月	7月	8月	9月	10月	11月	12月	1月	2月	3月	4月	5月	6月	7月	8月	9月	10月	11月	12月
① None no signature	78.34%	78.10%	76.61%	72.95%	73.05%	71.50%	69.64%	70.29%	68.90%	66.90%	63.20%	61.77%	62.81%	62.42%	62.14%	61.49%	57.75%	58.87%	60.31%	60.20%	59.74%	61.91%	61.42%	60.10%	61.22%	61.87%	59.92%	60.17%	60.22%	60.10%	60.71%	60.65%	60.29%	60.29%	58.85%	57.87%	58.61%	58.63%	57.10%	58.52%	58.64%	58.96%	56.66%	55.94%	58.02%	58.20%	55.10%	53.21%
② Neutral bad format	0.21%	0.17%	0.16%	0.16%	0.19%	0.21%	0.23%	0.19%	0.20%	0.22%	0.29%	0.32%	0.35%	0.35%	0.34%	0.32%	0.31%	0.24%	0.23%	0.21%	0.25%	0.19%	0.20%	0.17%	0.22%	0.28%	0.16%	0.15%	0.15%	0.15%	0.10%	0.08%	0.09%	0.15%	0.18%	0.17%	0.12%	0.11%	0.10%	0.12%	0.15%	0.19%	0.18%	0.16%	0.17%	0.17%	0.19%	0.16%
③ Pass good	19.97%	20.36%	21.97%	24.50%	25.16%	27.07%	29.25%	27.65%	29.25%	30.99%	34.53%	36.29%	34.66%	35.02%	35.80%	36.19%	39.52%	38.15%	38.53%	39.95%	38.55%	34.49%	34.98%	39.45%	35.33%	34.71%	36.79%	36.14%	36.29%	36.73%	36.11%	36.02%	36.45%	36.59%	37.89%	38.56%	37.41%	37.59%	38.35%	38.60%	39.95%	39.99%	39.94%	40.80%	40.65%	40.75%	42.37%	44.37%
④ Fail (bad) bad	0.27%	0.30%	0.25%	0.29%	0.29%	0.29%	0.30%	0.32%	0.34%	0.37%	0.37%	0.35%	0.38%	0.45%	0.48%	0.48%	1.18%	1.48%	1.81%	1.88%	1.95%	2.07%	1.91%	1.83%	1.63%	1.60%	1.57%	1.71%	1.60%	1.29%	1.40%	1.19%	1.21%	1.12%	1.32%	1.87%	1.74%	1.74%	1.41%	1.01%	1.23%	1.35%	1.85%	1.78%	1.67%	1.34%	1.20%	1.02%
⑤ TempError revoked	0.00%	0.00%	0.03%	0.04%	0.04%	0.02%	0.05%	0.03%	0.04%	0.02%	0.02%	0.01%	0.01%	0.01%	0.01%	0.02%	0.01%	0.01%	0.01%	0.00%	0.01%	0.02%	0.07%	0.01%	0.00%	0.01%	0.00%	0.01%	0.05%	0.06%	0.09%	0.41%	0.38%	0.39%	0.40%	0.43%	0.45%	0.42%	0.39%	0.42%	0.40%	0.38%	0.32%	0.22%	0.26%	0.35%	0.30%	0.34%
⑥ PermError no key	1.21%	1.07%	0.88%	1.06%	1.23%	1.34%	1.53%	1.32%	1.27%	1.40%	1.41%	1.26%	1.64%	1.75%	0.97%	1.00%	1.21%	1.25%	1.30%	1.68%	1.50%	1.31%	1.43%	1.38%	1.60%	1.54%	1.56%	1.85%	1.65%	1.63%	1.59%	1.65%	1.57%	1.47%	1.32%	1.29%	1.65%	1.51%	1.66%	1.34%	1.43%	1.57%	1.05%	1.11%	1.23%	1.00%	0.84%	0.91%



※出典:電気通信事業者4社の協力により、総務省がとりまとめ

### 送信ドメイン認証結果の集計(DKIM)(2023年9月時点)

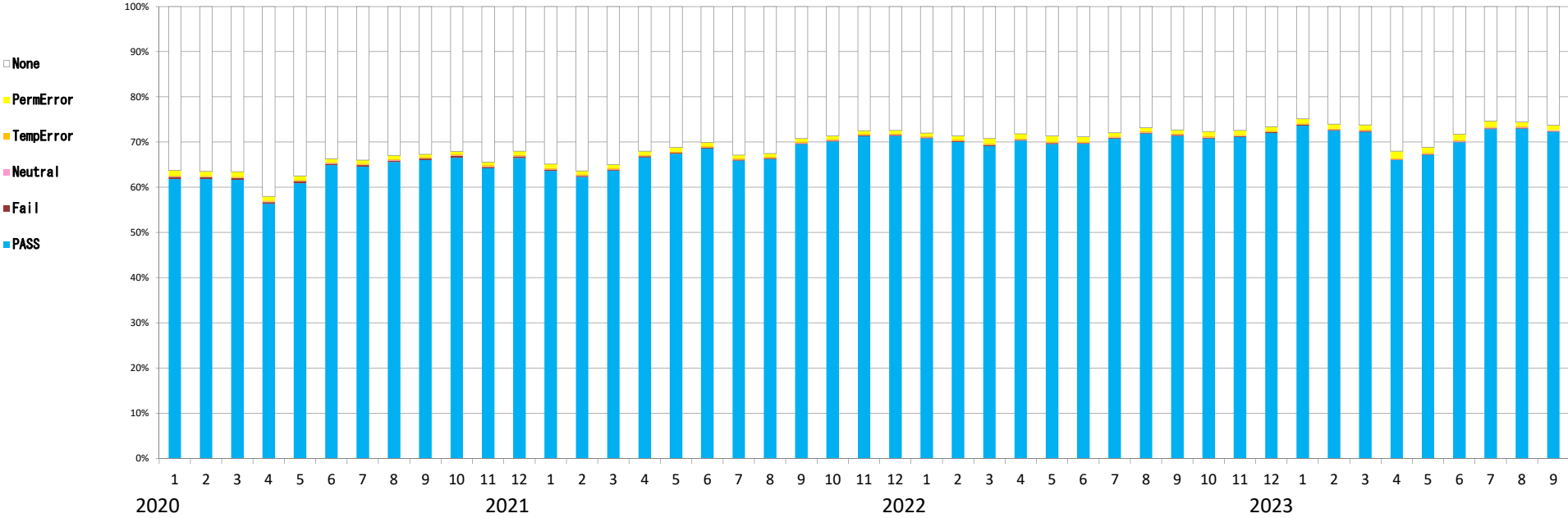
	2016年												2017年												2018年												2019年											
	1月	2月	3月	4月	5月	6月	7月	8月	9月	10月	11月	12月	1月	2月	3月	4月	5月	6月	7月	8月	9月	10月	11月	12月	1月	2月	3月	4月	5月	6月	7月	8月	9月	10月	11月	12月	1月	2月	3月	4月	5月	6月	7月	8月	9月	10月	11月	12月
① None no signature	55.82%	55.99%	55.91%	55.09%	54.81%	54.21%	53.49%	54.54%	54.35%	54.51%	56.81%	55.84%	54.08%	52.80%	52.47%	52.31%	50.85%	49.84%	50.25%	48.59%	47.28%	47.37%	47.89%	45.18%	45.95%	43.18%	39.25%	39.25%	39.04%	39.05%	39.25%	38.90%	39.58%	40.91%	38.65%	38.62%	37.46%	39.13%	38.81%	37.83%	38.57%	38.77%	38.33%	35.82%	36.03%	37.00%	36.38%	35.38%
② Neutral bad format	0.19%	0.18%	0.16%	0.15%	0.14%	0.11%	0.03%	0.03%	0.03%	0.03%	0.03%	0.03%	0.04%	0.04%	0.04%	0.03%	0.03%	0.03%	0.03%	0.03%	0.04%	0.04%	0.04%	0.04%	0.05%	0.09%	0.11%	0.11%	0.09%	0.09%	0.11%	0.12%	0.10%	0.10%	0.11%	0.08%	0.11%	0.09%	0.08%	0.07%	0.06%	0.08%	0.08%	0.08%	0.08%	0.08%	0.08%	
③ Pass good	41.71%	41.23%	41.03%	40.18%	41.18%	42.82%	43.28%	42.24%	42.54%	42.49%	40.34%	41.78%	43.45%	44.80%	44.95%	44.94%	46.31%	47.22%	46.95%	47.36%	48.79%	48.69%	49.20%	51.98%	50.98%	53.89%	57.26%	57.20%	57.76%	58.33%	58.16%	58.55%	58.20%	58.43%	58.87%	59.44%	59.94%	58.20%	58.57%	59.32%	58.88%	60.68%	61.08%	61.77%	61.13%	60.43%	61.45%	63.02%
④ Fail (bad) bad	1.12%	1.18%	1.08%	1.48%	1.30%	0.88%	1.11%	1.14%	0.98%	0.89%	0.88%	1.04%	1.22%	1.40%	1.31%	1.44%	1.48%	1.32%	1.17%	1.35%	1.34%	1.29%	0.94%	1.02%	1.03%	1.14%	1.15%	1.14%	1.07%	1.00%	1.05%	0.95%	0.92%	0.94%	0.88%	0.78%	0.70%	0.78%	0.71%	0.77%	0.64%	0.59%	0.68%	0.58%	0.63%	0.67%	0.48%	0.41%
⑤ TempError revoked	0.35%	0.33%	0.32%	0.35%	0.34%	0.33%	0.33%	0.32%	0.33%	0.34%	0.31%	0.31%	0.35%	0.37%	0.35%	0.39%	0.47%	0.38%	0.33%	0.31%	0.31%	0.32%	0.31%	0.31%	0.33%	0.32%	0.29%	0.31%	0.29%	0.31%	0.30%	0.29%	0.28%	0.28%	0.29%	0.28%	0.27%	0.28%	0.27%	0.26%	0.26%	0.24%	0.26%	0.29%	0.25%	0.25%		
⑥ PermError no key	0.83%	1.14%	2.23%	2.77%	2.24%	1.85%	1.78%	1.73%	1.79%	1.74%	1.55%	1.00%	0.88%	0.79%	0.87%	0.88%	1.06%	1.22%	1.17%	1.35%	1.25%	1.29%	1.63%	1.50%	1.67%	1.41%	1.89%	1.88%	1.70%	1.28%	1.03%	1.18%	1.10%	1.43%	1.25%	1.40%	1.52%	1.41%	1.44%	1.62%	1.57%	1.63%	1.62%	1.44%	1.89%	1.54%	1.18%	0.88%



※出典：電気通信事業者4社の協力により、総務省がとりまとめ

送信ドメイン認証結果の集計(DKIM)(2023年9月時点)

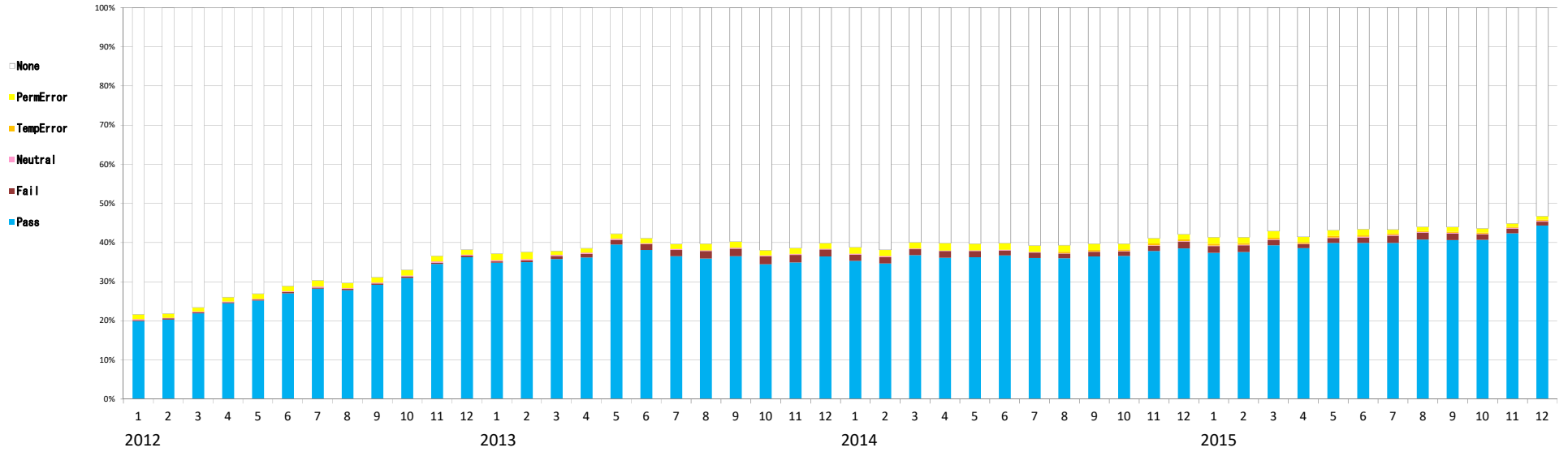
	2020年												2021年												2022年												2023年															
	1月	2月	3月	4月	5月	6月	7月	8月	9月	10月	11月	12月	1月	2月	3月	4月	5月	6月	7月	8月	9月	10月	11月	12月	1月	2月	3月	4月	5月	6月	7月	8月	9月	10月	11月	12月	1月	2月	3月	4月	5月	6月	7月	8月	9月							
The number of data ISP	4	4	4	4	4	4	4	4	4	4	4	4	3	3	4	4	4	4	4	4	4	4	4	4	4	4	4	4	4	4	4	4	4	4	4	4	4	4	4	4	4	4	4	4	4	4	4	4	4	4	4	
the ratio of DKIM																																																				
① None no signature	36.26%	36.48%	36.53%	42.04%	37.49%	33.70%	33.99%	32.96%	32.70%	32.05%	34.45%	32.03%	34.89%	36.38%	34.97%	32.02%	31.23%	30.13%	32.87%	32.55%	29.23%	28.64%	27.46%	27.45%	28.01%	28.65%	29.22%	28.19%	28.65%	28.84%	27.92%	26.83%	27.29%	27.67%	27.45%	26.59%	24.88%	26.01%	26.20%	32.03%	31.14%	28.23%	25.32%	25.55%	26.27%							
② Neutral bad format	0.08%	0.08%	0.06%	0.09%	0.09%	0.08%	0.09%	0.08%	0.09%	0.09%	0.09%	0.09%	0.08%	0.02%	0.03%	0.03%	0.03%	0.03%	0.03%	0.03%	0.03%	0.03%	0.04%	0.03%	0.03%	0.04%	0.05%	0.04%	0.05%	0.05%	0.05%	0.05%	0.05%	0.06%	0.05%	0.04%	0.04%	0.04%	0.04%	0.05%	0.05%	0.09%	0.10%	0.14%	0.12%	0.13%						
③ Pass good	61.83%	61.79%	61.67%	56.35%	60.88%	64.87%	64.55%	65.60%	66.00%	66.53%	64.20%	66.50%	63.62%	62.29%	63.67%	66.59%	67.39%	68.56%	65.89%	66.25%	69.52%	70.11%	71.29%	71.38%	70.80%	70.01%	69.11%	70.31%	69.55%	69.58%	70.77%	71.90%	71.37%	70.77%	71.10%	72.01%	73.64%	72.51%	72.25%	66.00%	67.19%	69.97%	72.87%	73.01%	72.30%							
④ Fail (bad) bad	0.43%	0.42%	0.36%	0.36%	0.39%	0.35%	0.35%	0.31%	0.35%	0.41%	0.32%	0.30%	0.29%	0.24%	0.24%	0.26%	0.23%	0.22%	0.21%	0.19%	0.22%	0.22%	0.21%	0.24%	0.21%	0.22%	0.24%	0.17%	0.21%	0.19%	0.17%	0.17%	0.19%	0.19%	0.18%	0.19%	0.20%	0.19%	0.19%	0.13%	0.13%	0.13%	0.14%	0.12%	0.11%							
⑤ TempError revoked	0.28%	0.25%	0.25%	0.26%	0.29%	0.27%	0.28%	0.26%	0.26%	0.26%	0.26%	0.28%	0.30%	0.28%	0.28%	0.28%	0.29%	0.28%	0.30%	0.30%	0.29%	0.27%	0.27%	0.28%	0.27%	0.25%	0.25%	0.28%	0.24%	0.23%	0.24%	0.25%	0.25%	0.25%	0.26%	0.23%	0.25%	0.26%	0.24%	0.25%	0.22%	0.24%	0.25%	0.23%	0.24%	0.09%						
⑥ PermError no key	1.16%	0.99%	1.13%	0.90%	0.86%	0.74%	0.77%	0.79%	0.82%	0.66%	0.68%	0.79%	0.83%	0.78%	0.81%	0.82%	0.83%	0.79%	0.70%	0.67%	0.70%	0.74%	0.74%	0.68%	0.68%	0.83%	1.13%	1.02%	1.30%	1.10%	0.85%	0.79%	0.84%	1.07%	0.99%	0.92%	0.97%	1.00%	1.07%	1.58%	1.22%	1.31%	1.30%	0.97%	1.09%							



※出典: 電気通信事業者4社の協力により、総務省がとりまとめ

### The situation of DKIM (as of September 2023)

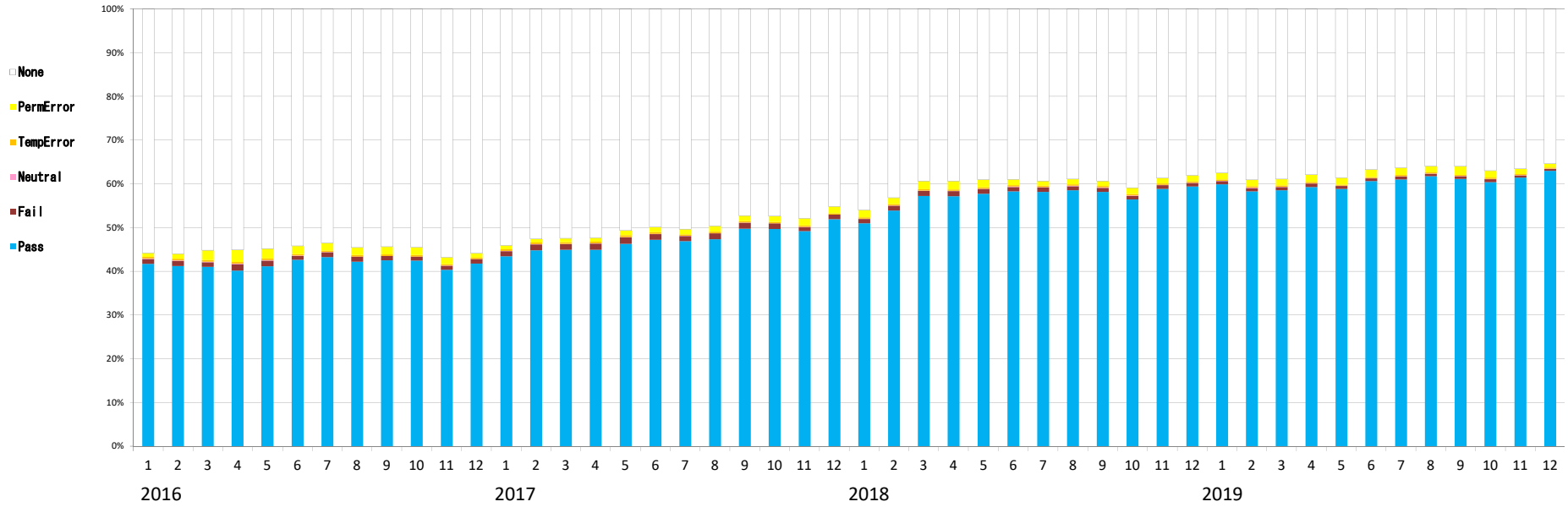
	2011年												2012年												2013年												2014年												2015年											
	7月	8月	9月	10月	11月	12月	1月	2月	3月	4月	5月	6月	7月	8月	9月	10月	11月	12月	1月	2月	3月	4月	5月	6月	7月	8月	9月	10月	11月	12月	1月	2月	3月	4月	5月	6月	7月	8月	9月	10月	11月	12月	1月	2月	3月	4月	5月	6月	7月	8月	9月	10月	11月	12月						
the number of data ISP	4	4	4	4	4	4	4	4	4	4	4	4	4	4	4	4	4	4	4	4	4	4	4	4	4	4	4	4	4	4	4	4	4	4	4	4	4	4	4	4	4	4	4	4	4	4	4	4	4	4	4	4	4	4	4	4	4	4	4	4
the ratio of DKIM																																																												
① None no signature	88.08%	89.30%	82.84%	80.86%	78.47%	77.97%	78.34%	78.10%	76.61%	73.95%	73.09%	71.00%	69.64%	70.29%	68.90%	66.98%	63.38%	61.77%	62.81%	62.42%	62.14%	61.49%	61.76%	58.87%	60.31%	60.20%	59.74%	61.91%	61.42%	60.16%	61.22%	61.87%	59.92%	60.17%	60.28%	60.16%	60.71%	60.65%	60.29%	60.29%	58.82%	57.87%	58.81%	58.63%	57.10%	58.92%	58.84%	56.56%	56.66%	55.94%	56.02%	56.30%	55.10%	53.21%						
② Neutral bad format	0.18%	0.13%	0.13%	0.18%	0.19%	0.22%	0.21%	0.17%	0.16%	0.16%	0.19%	0.21%	0.22%	0.19%	0.20%	0.22%	0.29%	0.32%	0.30%	0.35%	0.24%	0.32%	0.31%	0.24%	0.22%	0.21%	0.22%	0.19%	0.20%	0.17%	0.22%	0.28%	0.16%	0.13%	0.12%	0.12%	0.10%	0.08%	0.09%	0.10%	0.16%	0.17%	0.19%	0.11%	0.10%	0.12%	0.15%	0.19%	0.18%	0.16%	0.16%	0.17%	0.17%	0.19%	0.16%					
③ Pass good	10.70%	9.70%	16.10%	17.76%	20.30%	20.83%	18.97%	20.38%	21.97%	24.50%	25.14%	27.07%	28.22%	27.65%	29.25%	30.99%	34.53%	36.29%	34.88%	35.02%	35.80%	36.19%	38.52%	38.15%	36.53%	35.90%	36.50%	34.49%	34.98%	36.45%	35.33%	34.71%	36.79%	36.14%	36.29%	36.73%	36.11%	36.02%	36.42%	36.59%	37.89%	38.56%	37.41%	37.59%	39.35%	38.60%	39.95%	39.96%	39.94%	40.80%	40.65%	40.72%	42.37%	44.37%						
④ Fail (bad) bad	0.04%	0.03%	0.29%	0.32%	0.32%	0.32%	0.27%	0.30%	0.29%	0.29%	0.29%	0.32%	0.34%	0.37%	0.37%	0.37%	0.30%	0.38%	0.45%	0.44%	0.49%	1.19%	1.48%	1.61%	1.89%	1.95%	2.07%	1.91%	1.83%	1.63%	1.63%	1.67%	1.71%	1.69%	1.29%	1.40%	1.19%	1.21%	1.12%	1.12%	1.22%	1.67%	1.74%	1.74%	1.41%	1.61%	1.22%	1.35%	1.85%	1.78%	1.67%	1.34%	1.29%	1.02%						
⑤ TempError revoked	0.00%	0.00%	0.00%	0.00%	0.00%	0.00%	0.00%	0.00%	0.00%	0.00%	0.00%	0.00%	0.00%	0.00%	0.00%	0.00%	0.00%	0.01%	0.01%	0.01%	0.01%	0.01%	0.01%	0.01%	0.00%	0.01%	0.02%	0.07%	0.07%	0.00%	0.01%	0.00%	0.01%	0.00%	0.01%	0.00%	0.00%	0.00%	0.41%	0.39%	0.39%	0.41%	0.42%	0.45%	0.42%	0.39%	0.42%	0.40%	0.38%	0.22%	0.22%	0.26%	0.29%	0.24%						
⑥ PermError no key	0.00%	0.00%	0.00%	0.00%	0.00%	0.00%	0.00%	0.00%	0.00%	0.00%	0.00%	0.00%	0.00%	0.00%	0.00%	0.00%	0.00%	0.00%	0.00%	0.00%	0.00%	0.00%	0.00%	0.00%	0.00%	0.00%	0.00%	0.00%	0.00%	0.00%	0.00%	0.00%	0.00%	0.00%	0.00%	0.00%	0.00%	0.00%	0.00%	0.00%	0.00%	0.00%	0.00%	0.00%	0.00%	0.00%	0.00%	0.00%	0.00%	0.00%	0.00%	0.00%	0.00%	0.00%						



\* With cooperation of domestic ISP 4 companies, MIC compiled.  
 \* In the E-mail which is circulating.

### The situation of DKIM (as of September 2023)

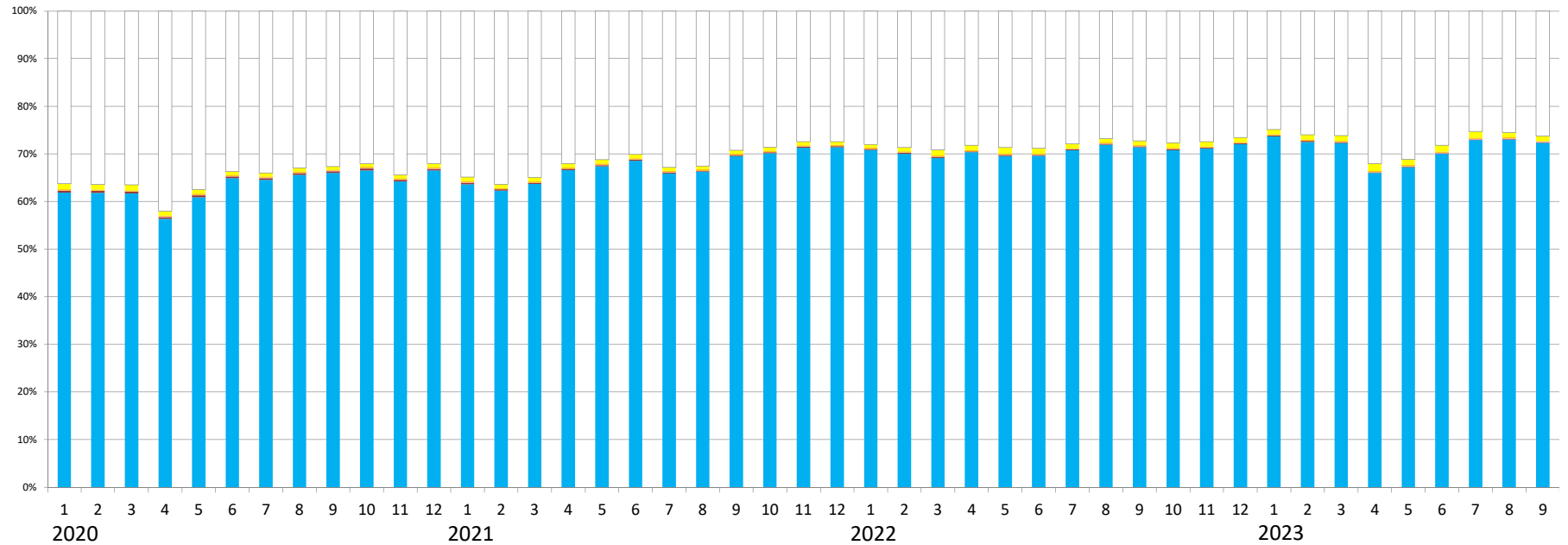
		2016年												2017年												2018年												2019年												
The number of data ISP		1月	2月	3月	4月	5月	6月	7月	8月	9月	10月	11月	12月	1月	2月	3月	4月	5月	6月	7月	8月	9月	10月	11月	12月	1月	2月	3月	4月	5月	6月	7月	8月	9月	10月	11月	12月	1月	2月	3月	4月	5月	6月	7月	8月	9月	10月	11月	12月	
the ratio of DKIM																																																		
①	None no signature	55.82%	55.99%	55.21%	55.09%	54.81%	54.21%	53.49%	54.54%	54.35%	54.51%	56.81%	55.84%	54.06%	52.80%	52.47%	52.21%	50.85%	49.84%	50.25%	48.59%	47.28%	47.37%	47.89%	45.18%	45.95%	43.18%	39.22%	39.25%	39.64%	39.00%	39.25%	38.90%	39.59%	40.91%	38.65%	38.02%	37.46%	39.12%	38.81%	37.82%	38.57%	36.77%	36.22%	35.82%	36.03%	37.00%	36.38%	35.28%	
②	Neutral bad format	0.19%	0.18%	0.14%	0.15%	0.14%	0.11%	0.02%	0.02%	0.02%	0.02%	0.02%	0.02%	0.04%	0.04%	0.04%	0.02%	0.02%	0.02%	0.02%	0.02%	0.04%	0.04%	0.04%	0.04%	0.04%	0.05%	0.09%	0.11%	0.11%	0.09%	0.09%	0.11%	0.12%	0.10%	0.10%	0.11%	0.08%	0.11%	0.09%	0.08%	0.07%	0.06%	0.08%	0.08%	0.08%	0.08%	0.08%	0.08%	
③	Pass good	41.71%	41.22%	41.03%	40.18%	41.18%	42.82%	43.28%	42.24%	42.54%	42.49%	40.34%	41.79%	43.42%	44.80%	44.95%	44.94%	46.31%	47.22%	46.95%	47.26%	48.79%	48.69%	49.20%	51.98%	50.98%	53.89%	57.26%	57.20%	57.76%	58.32%	58.16%	58.55%	58.20%	56.43%	58.87%	59.44%	59.94%	58.20%	58.57%	59.32%	58.88%	60.68%	61.05%	61.77%	61.12%	60.42%	61.42%	63.02%	
④	Fail (bad) bad	1.12%	1.18%	1.08%	1.48%	1.30%	0.88%	1.11%	1.14%	0.98%	0.89%	0.88%	1.04%	1.22%	1.40%	1.31%	1.44%	1.48%	1.32%	1.17%	1.35%	1.34%	1.29%	0.94%	1.02%	1.02%	1.14%	1.15%	1.14%	1.07%	1.00%	1.05%	0.95%	0.92%	0.94%	0.88%	0.79%	0.70%	0.78%	0.71%	0.77%	0.64%	0.59%	0.68%	0.58%	0.63%	0.67%	0.48%	0.41%	
⑤	TempError revoked	0.35%	0.33%	0.32%	0.35%	0.34%	0.32%	0.32%	0.33%	0.34%	0.31%	0.31%	0.31%	0.35%	0.37%	0.35%	0.39%	0.47%	0.38%	0.32%	0.31%	0.31%	0.32%	0.31%	0.31%	0.33%	0.32%	0.29%	0.31%	0.29%	0.31%	0.30%	0.29%	0.28%	0.28%	0.29%	0.28%	0.28%	0.29%	0.28%	0.27%	0.28%	0.27%	0.26%	0.26%	0.24%	0.26%	0.29%	0.25%	0.25%
⑥	PermError no key	0.82%	1.14%	2.22%	2.77%	2.24%	1.85%	1.78%	1.73%	1.79%	1.74%	1.55%	1.00%	0.88%	0.79%	0.87%	0.88%	1.06%	1.22%	1.17%	1.35%	1.25%	1.29%	1.63%	1.50%	1.67%	1.41%	1.89%	1.88%	1.70%	1.28%	1.02%	1.18%	1.10%	1.43%	1.25%	1.40%	1.52%	1.41%	1.44%	1.62%	1.57%	1.63%	1.62%	1.44%	1.89%	1.54%	1.18%	0.88%	



\* With cooperation of domestic ISP 4 companies, MIC compiled.  
 \* In the E-mail which is circulating.

### The situation of DKIM (as of September 2023)

		2020年												2021年												2022年												2023年									
The number of data ISP		1月	2月	3月	4月	5月	6月	7月	8月	9月	10月	11月	12月	1月	2月	3月	4月	5月	6月	7月	8月	9月	10月	11月	12月	1月	2月	3月	4月	5月	6月	7月	8月	9月	10月	11月	12月	1月	2月	3月	4月	5月	6月	7月	8月	9月	
the ratio of DKIM																																															
(1)	None no signature	36.26%	36.48%	36.53%	42.04%	37.49%	33.70%	33.99%	32.96%	32.70%	32.05%	34.45%	32.03%	34.89%	36.38%	34.97%	32.02%	31.23%	30.13%	32.87%	32.55%	29.23%	28.64%	27.46%	27.45%	28.01%	28.65%	29.22%	28.19%	28.65%	28.84%	27.92%	26.83%	27.29%	27.67%	27.45%	26.59%	24.88%	26.01%	26.20%	32.03%	31.14%	28.23%	25.32%	25.55%	26.27%	
(2)	Neutral bad format	0.08%	0.08%	0.06%	0.09%	0.09%	0.08%	0.09%	0.08%	0.09%	0.09%	0.09%	0.09%	0.08%	0.02%	0.03%	0.03%	0.03%	0.03%	0.03%	0.03%	0.03%	0.04%	0.03%	0.03%	0.03%	0.04%	0.05%	0.04%	0.05%	0.05%	0.05%	0.06%	0.05%	0.04%	0.04%	0.04%	0.04%	0.04%	0.04%	0.05%	0.05%	0.09%	0.10%	0.14%	0.12%	0.13%
(3)	Pass good	61.83%	61.79%	61.67%	56.35%	60.88%	64.87%	64.55%	65.60%	66.00%	66.53%	64.20%	66.50%	63.62%	62.29%	63.67%	66.59%	67.39%	68.56%	65.89%	66.25%	69.52%	70.11%	71.29%	71.38%	70.80%	70.01%	69.11%	70.31%	69.55%	69.58%	70.77%	71.90%	71.37%	70.77%	71.10%	72.01%	73.64%	72.51%	72.25%	66.00%	67.19%	69.97%	72.87%	73.01%	72.30%	
(4)	Fail (bad) bad	0.43%	0.42%	0.36%	0.36%	0.39%	0.35%	0.35%	0.31%	0.35%	0.41%	0.32%	0.30%	0.29%	0.24%	0.24%	0.26%	0.23%	0.22%	0.21%	0.19%	0.22%	0.22%	0.21%	0.24%	0.21%	0.22%	0.24%	0.17%	0.21%	0.19%	0.17%	0.19%	0.19%	0.18%	0.19%	0.20%	0.19%	0.19%	0.13%	0.13%	0.13%	0.14%	0.12%	0.11%		
(5)	TempError revoked	0.28%	0.25%	0.25%	0.28%	0.29%	0.27%	0.28%	0.28%	0.28%	0.28%	0.28%	0.28%	0.30%	0.28%	0.28%	0.28%	0.29%	0.28%	0.30%	0.30%	0.29%	0.27%	0.27%	0.28%	0.27%	0.25%	0.25%	0.28%	0.24%	0.23%	0.24%	0.25%	0.25%	0.26%	0.23%	0.25%	0.26%	0.24%	0.25%	0.22%	0.24%	0.25%	0.23%	0.24%	0.09%	
(6)	PermError no key	1.16%	0.99%	1.13%	0.90%	0.86%	0.74%	0.77%	0.79%	0.82%	0.66%	0.68%	0.79%	0.83%	0.78%	0.81%	0.82%	0.83%	0.79%	0.70%	0.67%	0.70%	0.74%	0.74%	0.68%	0.68%	0.83%	1.13%	1.02%	1.30%	1.10%	0.85%	0.79%	0.84%	1.07%	0.98%	0.92%	0.97%	1.00%	1.07%	1.58%	1.22%	1.31%	1.30%	0.97%	1.09%	



\* With cooperation of domestic ISP 4 companies, MIC compiled.  
 \* In the E-mail which is circulating.